



Priced

\$575,000

Elevation TW

2,927 Sq Ft

2.0 Story

4 Beds

3.5 Baths

2 Car Garage

Master Bedroom: Down

About 59 W Cannalily Lane

- First-floor primary suite with tray ceiling and crown molding, walk-in closet with wood shelving, dual sinks with quartz countertops in "Niagara", Seattle Snow shaker cabinets, tile shower, garden soaking tub with tile surround, linen closet, and private water closet.
- Great room with built-in shelving and gas log fireplace with decorative mantle and granite surround in "Absolute Black" and access to screened deck overlooking the .62 acre homesite!
- Gourmet kitchen features island with sink overlooking the great room, granite countertops in "New Caledonia", white shaker cabinets, "Arctic White" subway tile backsplash, breakfast area and pantry

...Read More Online

About The Community.

The town of Clayton, NC is one of the fastest-growing communities in the Triangle, but you'd never guess it from the quaint, small-town charm that abounds. From its quaint Downtown scene—complete with local shops and restaurants, a weekend farmers market, a library, and a performing arts center—to its beautiful local parks, trails, and golf courses, Clayton has something for everyone.

At Winston Pointe, you're just minutes from all the local favorites of Clayton! Tastings at Wine on Main, karaoke nights at Flipside Cafe, canine socials at the Dog Park, scenic walks along the Clayton River Walk... they're all just minutes outside your front door.

...Read More Online

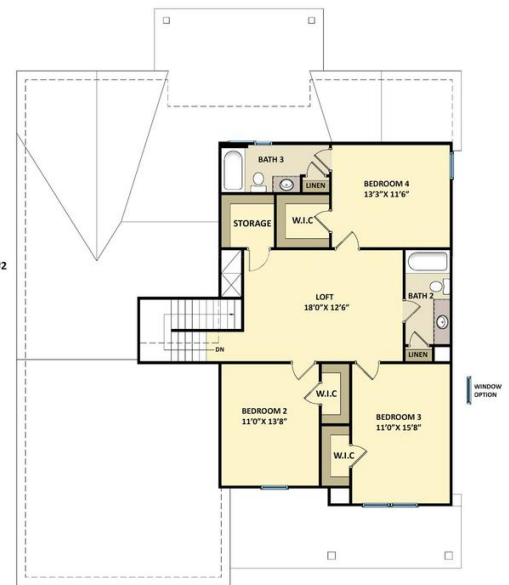
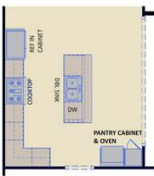
Prices, plans, dimensions, features, specifications, materials, and availability of homes or communities are subject to change without notice or obligation. Illustrations are artists depictions only and may differ from completed improvements. All prices subject to change without notice. Please contact your sales associate before writing an offer.

The Page
 CC2927

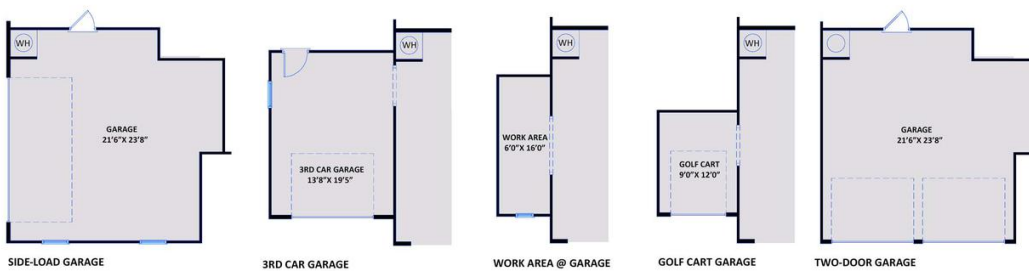
FIRST FLOOR

SECOND FLOOR

- (2) 2/8" FULL LITE DOORS (80% TO) = 2-1/2" WALL
 - 5/8" TRIPLE SLIDER IN 2-1/2" WALL
 - 6/8" SLIDER
 - 1/4" FULL LITE DOUBLE OPERABLE
 - 1/4" FULL LITE TRIUMPH DOOR
- GREAT ROOM DOOR OPTIONS**



EXTENDED FRONT PORCH OPTION



Prices, plans, dimensions, features, specifications, materials, and availability of homes or communities are subject to change without notice or obligation. Illustrations are artists depictions only and may differ from completed improvements. All prices subject to change without notice. Please contact your sales associate before writing an offer.

