



3,224 Sq. Ft.

2 Stories

5 - 6 Bed

4.5 Bath

2 - 3 Garage

Master Bed: Down

## About Beaufort

This floorplan features a primary suite and in-law suite on the first floor!

- Primary suite with two walk-in closets, two separate sinks, garden tub, walk-in shower, private water closet and linen closet
- Great room with fireplace
- Eat-in kitchen with island, pantry cabinets, view to great room and access to optional covered porch with gourmet kitchen option available
- Formal dining room with coffered ceiling and wainscoting detail option

...Read More Online

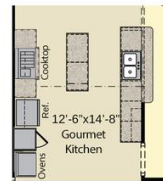


Elevation C

The Beaufort

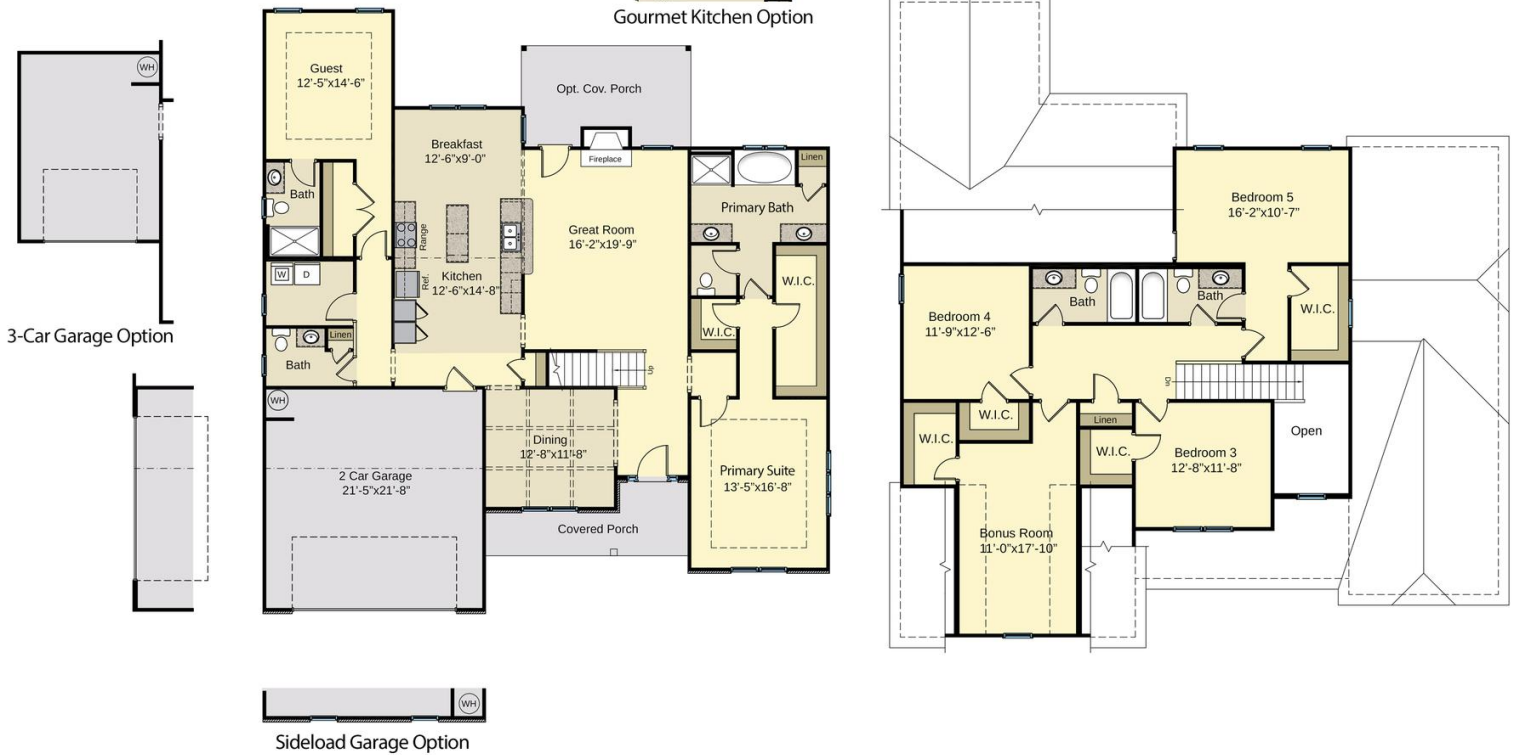
CC3224

FIRST FLOOR



Gourmet Kitchen Option

SECOND FLOOR



Prices, plans, dimensions, features, specifications, materials, and availability of homes or communities are subject to change without notice or obligation. Illustrations are artists depictions only and may differ from completed improvements. All prices subject to change without notice. Please contact your sales associate before writing an offer.

