



359 Lyman Drive
Fayetteville, NC 28312

BLAKEFIELD - CAMBRIDGE

CONTACT OUR NEW HOME SPECIALISTS

MAGGIE & JESSICA

Call Us @ 910-405-8311

info@cavinessandcates.com



Priced

\$389,970

2,432 Sq Ft

1.5 Story

4 Beds

3.0 Baths

2 Car Garage

Primary Bedroom: Down

About 359 Lyman Drive

- Great room with gas log fireplace with decorative mantle and granite surround in "Absolute Back".
- Open kitchen with island with sink overlooking the great room, granite countertops in "New Caledonia", subway tile backsplash in "Arctic White" set in a herringbone pattern, white shaker cabinets, and pantry; Stainless steel microwave, dishwasher, and smooth top range.
- Dining room with views to the backyard and access to spacious rear covered porch and grill patio.
- Primary suite on first floor with tray ceiling and crown molding and walk-in closet; Primary bath with dual sinks with quartz countertop in "Simply White", white shaker cabinets with center drawer stack,

...Read More Online

About The Community.

Welcome to **Blakefield**, a peaceful, family-friendly community that blends **tranquil living with modern convenience**. Nestled near Eastover and Fayetteville, Blakefield offers spacious homesites in a scenic, rural setting while keeping you close to everything you need.

Enjoy nearby shopping, dining, and entertainment, including **Baywood Golf & Country Club**, the **Cape Fear Botanical Garden**, and beautiful local parks. With downtown Fayetteville just minutes away, **Fort Bragg under 20 miles**, and schools conveniently nearby, Blakefield is perfectly situated for growing

Community Open House!

...Read More Online

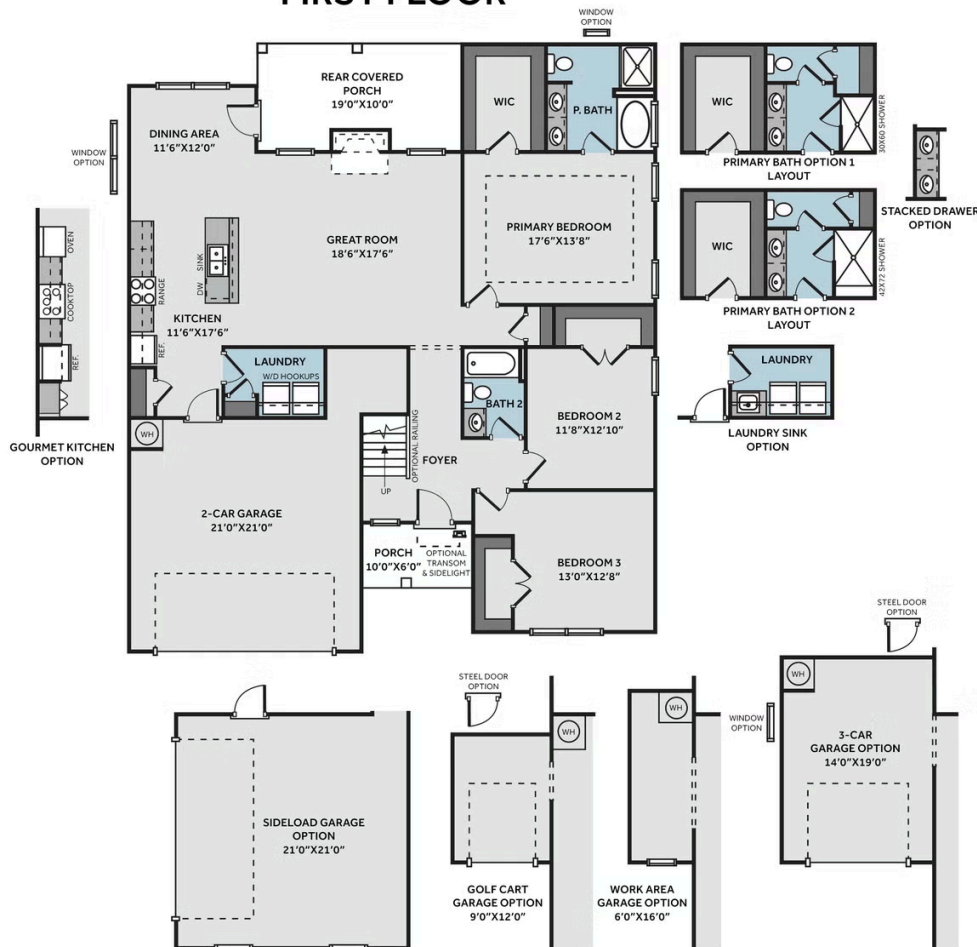
Prices, plans, dimensions, features, specifications, materials, and availability of homes or communities are subject to change without notice or obligation. Illustrations are artists depictions only and may differ from completed improvements. All prices subject to change without notice. Please contact your sales associate before writing an offer.



THE CAMBRIDGE

CC1850

FIRST FLOOR



SECOND FLOOR

