



363 Lyman Drive
Fayetteville, NC 28312

BLAKEFIELD - PAMLICO

CONTACT OUR NEW HOME SPECIALISTS

MAGGIE & JESSICA

Call Us @ 910-405-8311

info@cavinessandcates.com



Priced

\$349,900

2,522 Sq Ft

2.0 Story

5 Beds

3.0 Baths

2 Car Garage

Primary Bedroom: Up

About 363 Lyman Drive

- First floor with flex room with tray ceiling and crown molding and full lite doors.
- Open kitchen with island overlooking the great room, granite countertops in "Azul Platino", natural stone mosaic herringbone tile, corner pantry, and breakfast area; Stainless steel microwave, dishwasher, and smooth top range.
- Great room with corner gas fireplace with decorative mantle and granite surround in "Absolute Black" and access to rear covered porch and grill patio through sliding glass door.
- Guest room located on first floor with hall access to full bathroom with vanity, tub/shower

...Read More Online

About The Community.

Welcome to **Blakefield**, a peaceful, family-friendly community that blends **tranquil living with modern convenience**. Nestled near Eastover and Fayetteville, Blakefield offers spacious homesites in a scenic, rural setting while keeping you close to everything you need.

Enjoy nearby shopping, dining, and entertainment, including **Baywood Golf & Country Club**, the **Cape Fear Botanical Garden**, and beautiful local parks. With downtown Fayetteville just minutes away, **Fort Bragg under 20 miles**, and schools conveniently nearby, Blakefield is perfectly situated for growing families.

Experience the charm, space, and convenience that make Blakefield the ideal place to call home.

...Read More Online

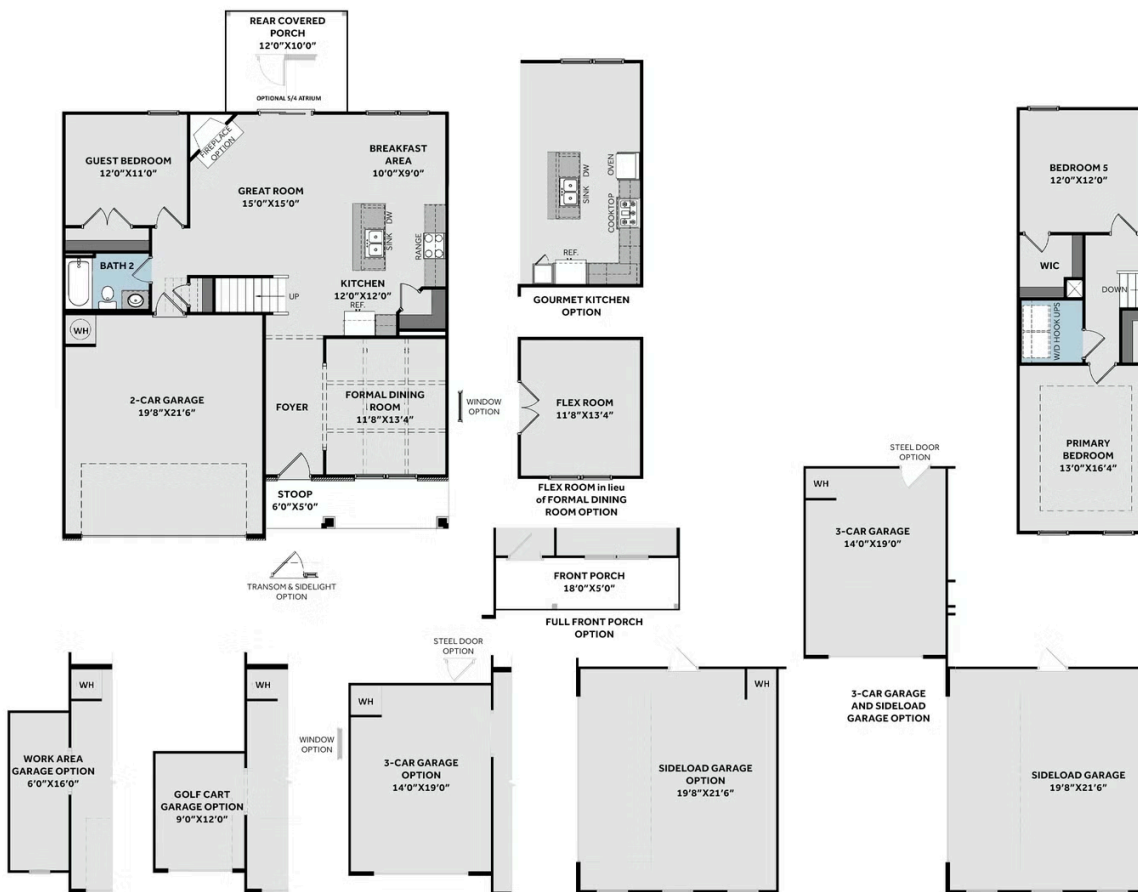
Prices, plans, dimensions, features, specifications, materials, and availability of homes or communities are subject to change without notice or obligation. Illustrations are artists depictions only and may differ from completed improvements. All prices subject to change without notice. Please contact your sales associate before writing an offer.



ARCHIVED 11/5/2024

THE PAMLICO CC2522

FIRST FLOOR



SECOND FLOOR

