



367 Lyman Drive
Fayetteville, NC 28312

BLAKEFIELD - GRANVILLE

CONTACT OUR NEW HOME SPECIALISTS

MAGGIE & JESSICA

Call Us @ 910-405-8311

info@cavinessandcates.com



Priced

\$399,986

2,724 Sq Ft

2.0 Story

4 Beds

2.5 Baths

2 Car Garage

Primary Bedroom: Down

About 367 Lyman Drive

- Great room with gas log fireplace with decorative mantle and granite surround in "Absolute Black".
- Formal dining room painted in Sherwin Williams "Moody Blue" with coffered ceiling and picture frame wainscoting detail.
- Kitchen with breakfast area and sink overlooking the great room, quartz countertops in "Carrera Cloud", subway tile backsplash in "Arctic White" set in a brick pattern, white shaker cabinets, and pantry; Stainless steel microwave, dishwasher, and smooth top range.
- Rear covered porch with grill patio is easily accessible through the breakfast area.

...Read More Online

About The Community.

Welcome to **Blakefield**, a peaceful, family-friendly community that blends **tranquil living with modern convenience**. Nestled near Eastover and Fayetteville, Blakefield offers spacious homesites in a scenic, rural setting while keeping you close to everything you need.

Enjoy nearby shopping, dining, and entertainment, including **Baywood Golf & Country Club**, the **Cape Fear Botanical Garden**, and beautiful local parks. With downtown Fayetteville just minutes away, **Fort Bragg under 20 miles**, and schools conveniently nearby, Blakefield is perfectly situated for growing families.

Experience the charm, space, and convenience that make Blakefield the ideal place to call home.

...Read More Online

Prices, plans, dimensions, features, specifications, materials, and availability of homes or communities are subject to change without notice or obligation. Illustrations are artists depictions only and may differ from completed improvements. All prices subject to change without notice. Please contact your sales associate before writing an offer.

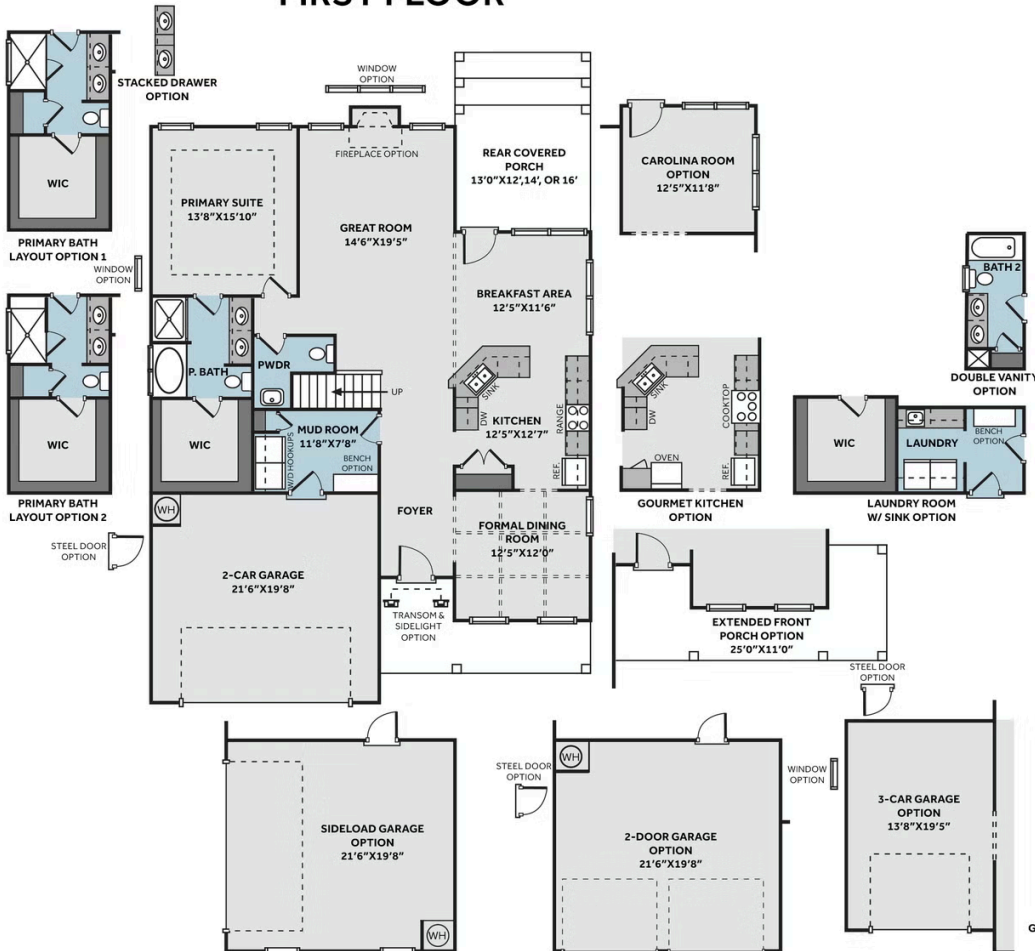


ARCHIVED 2/21/2025

THE GRANVILLE

CC2680

FIRST FLOOR



SECOND FLOOR

