



368 Whitestone Drive
Fayetteville, NC 28312

BLAKEFIELD - MEADOWBROOK

CONTACT OUR NEW HOME SPECIALISTS

MAGGIE & JESSICA

Call Us @ 910-405-8311

info@cavinessandcates.com



Priced

\$339,700

1,997 Sq Ft

2.0 Story

3 Beds

2.5 Baths

3 Car Garage

Primary Bedroom: Up

About 368 Whitestone Drive

- This stunning home offers a spacious and inviting layout, beginning with a generous Great Room that seamlessly connects to the rear covered porch and grill patio—perfect for indoor-outdoor living.
- The open-concept Kitchen overlooks the Great Room and features bar seating, "Trigato" quartz countertops, white shaker cabinets, a natural stone herringbone mosaic backsplash, and a convenient pantry. A stainless steel microwave, dishwasher, and smooth-top range complement the space, while the sink offers a picturesque view of the backyard.

[...Read More Online](#)

About The Community.

Welcome to **Blakefield**, a peaceful, family-friendly community that blends **tranquil living with modern convenience**. Nestled near Eastover and Fayetteville, Blakefield offers spacious homesites in a scenic, rural setting while keeping you close to everything you need.

Enjoy nearby shopping, dining, and entertainment, including **Baywood Golf & Country Club**, the **Cape Fear Botanical Garden**, and beautiful local parks. With downtown Fayetteville just minutes away, **Fort Bragg under 20 miles**, and schools conveniently nearby, Blakefield is perfectly situated for growing families.

Experience the charm, space, and convenience that make Blakefield the ideal place to call home.

[...Read More Online](#)

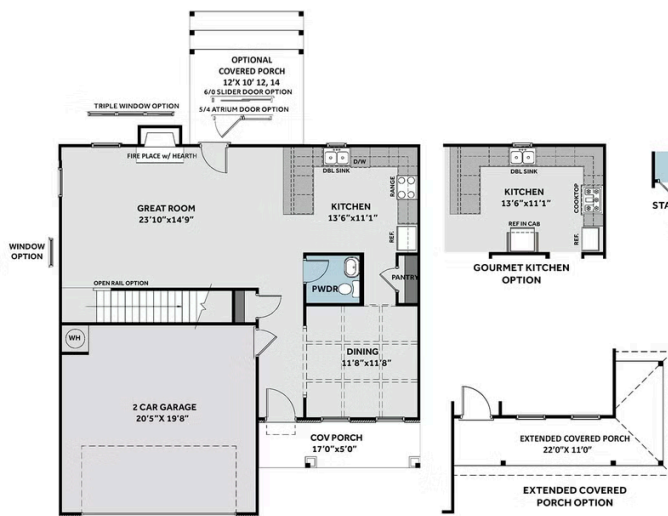
Prices, plans, dimensions, features, specifications, materials, and availability of homes or communities are subject to change without notice or obligation. Illustrations are artists depictions only and may differ from completed improvements. All prices subject to change without notice. Please contact your sales associate before writing an offer.



THE MEADOWBROOK

CC1997

FIRST FLOOR



SECOND FLOOR

