



507 Log Pond Road
Fayetteville, NC 28311

ELLIOT FARMS - ONSLOW

CONTACT OUR NEW HOME SPECIALISTS

MAGGIE & JESSICA

Call Us @ 910-405-8311

info@cavinessandcates.com



Priced

\$338,900

1,885 Sq Ft

2.0 Story

3 Beds

2.5 Baths

3 Car Garage

Primary Bedroom: Up

About 507 Log Pond Road

- The Onslow home welcomes you with a foyer that provides convenient access to a half-bath before opening into a spacious great room connected to the kitchen and dining area.
- The kitchen is designed for both style and function, featuring a countertop bar for seating, granite countertops in "Giallo Ornamental Guidoni", white shaker cabinets, a pantry, and stainless steel appliances—including a microwave, dishwasher, and smooth-top range.
- The open dining area extends seamlessly to the grill patio through sliding doors.
- Upstairs, the primary suite offers two separate walk-in closets and a private bath with a dual sink

...Read More Online

About The Community.

Welcome to **Elliot Farms**, a peaceful Fayetteville community designed for comfort and connection. Homes range from **1,500 to 2,100 sq. ft.**, offering thoughtfully designed layouts perfect for families of all sizes.

Enjoy community amenities like a **dog park, playground, and walking trail**, making it easy to spend time outdoors and connect with neighbors.

Ideally located on the north side of Fayetteville, Elliot Farms is less than 15 minutes from Fort Bragg gates

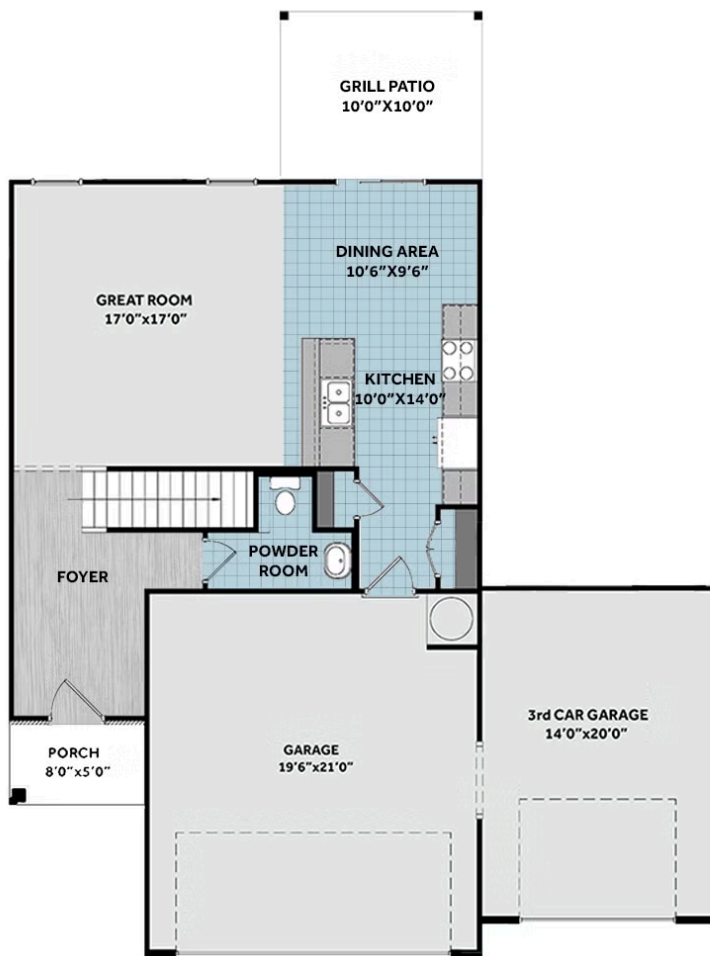
Community Open House!

...Read More Online

Prices, plans, dimensions, features, specifications, materials, and availability of homes or communities are subject to change without notice or obligation. Illustrations are artists depictions only and may differ from completed improvements. All prices subject to change without notice. Please contact your sales associate before writing an offer.



FIRST FLOOR



SECOND FLOOR

