



511 Log Pond Road  
Fayetteville, NC 28311

ELLIOT FARMS - GRAHAM

CONTACT OUR NEW HOME SPECIALISTS

**MAGGIE & JESSICA**

Call Us @ 910-405-8311

info@cavinessandcates.com



**Priced**

**\$358,900**

2,048 Sq Ft

2.0 Story

3 Beds

2.5 Baths

2 Car Garage

Primary Bedroom: Up

## About 511 Log Pond Road

- Off the foyer, a dining room connects to the kitchen, with a nearby half-bath for convenience.
- The open-concept main living area seamlessly connects the kitchen and breakfast area.
- The kitchen features an eat-in island with bar seating, white shaker cabinets, "Luna Pearl" granite countertops, a pantry, and stainless steel appliances, including a microwave, dishwasher, and smooth-top range.
- The breakfast area opens to the grill patio, while the great room provides convenient access to the garage.

[...Read More Online](#)

## About The Community.

Welcome to **Elliot Farms**, a peaceful Fayetteville community designed for comfort and connection. Homes range from **1,500 to 2,100 sq. ft.**, offering thoughtfully designed layouts perfect for families of all sizes.

Enjoy community amenities like a **dog park, playground, and walking trail**, making it easy to spend time outdoors and connect with neighbors.

Ideally located on the north side of Fayetteville, Elliot Farms is less than 15 minutes from Fort Bragg gates

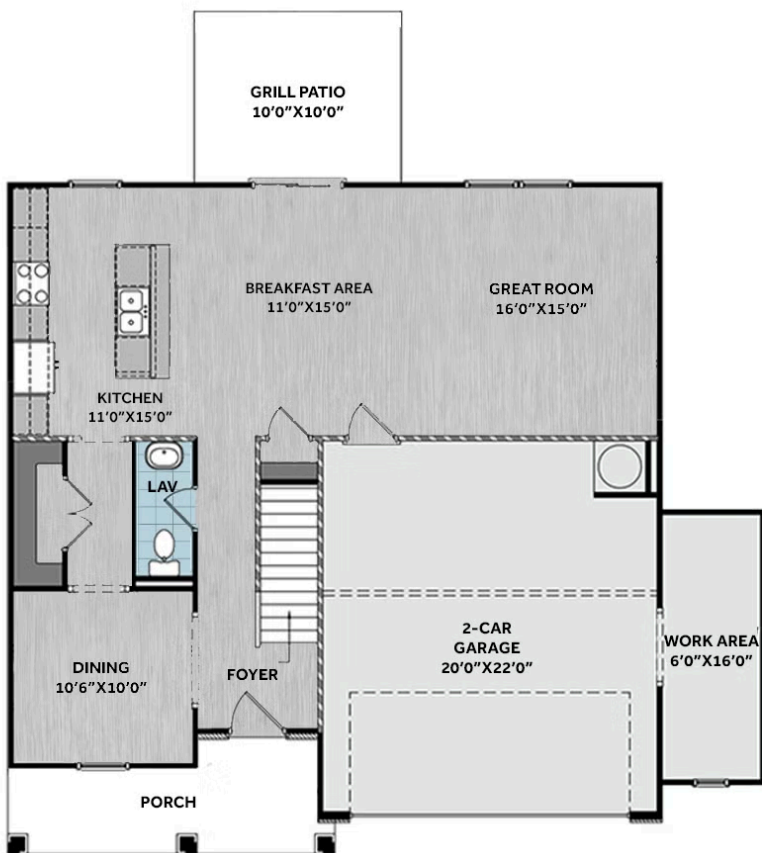


[...Read More Online](#)

Prices, plans, dimensions, features, specifications, materials, and availability of homes or communities are subject to change without notice or obligation. Illustrations are artists depictions only and may differ from completed improvements. All prices subject to change without notice. Please contact your sales associate before writing an offer.



## FIRST FLOOR



## SECOND FLOOR

