



5410 Tall Timbers Drive
Fayetteville, NC 28311

ELLIOT FARMS - HINTON

CONTACT OUR NEW HOME SPECIALISTS

MAGGIE & JESSICA

Call Us @ 910-405-8311

info@cavinessandcates.com



Priced

\$314,900

Elevation A - Artistic Rendering for
Representation Purposes Only

1,790 Sq Ft

2.0 Story

3 Beds

2.5 Baths

1 Car Garage

Primary Bedroom: Up

About 5410 Tall Timbers Drive

- Sitting on a spacious .67-acre lot, this open concept home welcomes you with a charming covered front porch and a bright, open great room.
- The kitchen features white shaker cabinets, "New Caledonia" granite countertops, a large island with a sink, stainless steel appliances including a microwave, dishwasher, and smooth top range, and a walk-in pantry, all flowing into a bright dining area with backyard views.
- From the dining area, step out onto the grill patio—perfect for outdoor dining or relaxing.
- A coat closet and convenient half-bath are located near the garage entry, completing the main

...Read More Online

About The Community.

Welcome to **Elliot Farms**, a peaceful Fayetteville community designed for comfort and connection. Homes range from **1,500 to 2,100 sq. ft.**, offering thoughtfully designed layouts perfect for families of all sizes.

Enjoy community amenities like a **dog park, playground, and walking trail**, making it easy to spend time outdoors and connect with neighbors.

Ideally located on the north side of Fayetteville, Elliot Farms is less than 15 minutes from Fort Bragg gates

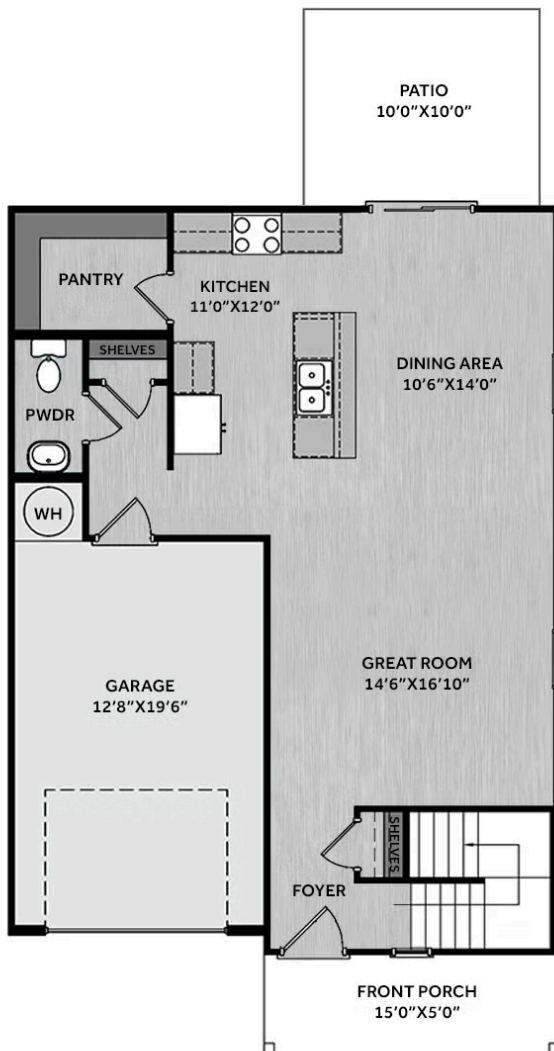


...Read More Online

Prices, plans, dimensions, features, specifications, materials, and availability of homes or communities are subject to change without notice or obligation. Illustrations are artists depictions only and may differ from completed improvements. All prices subject to change without notice. Please contact your sales associate before writing an offer.



FIRST FLOOR



SECOND FLOOR

