



5414 Tall Timbers Drive  
Fayetteville, NC 28311

ELLIOT FARMS - TRYON

CONTACT OUR NEW HOME SPECIALISTS

**MAGGIE & JESSICA**

Call Us @ 910-405-8311

info@cavinessandcates.com



**Priced**

**\$309,900**

Home on 3/24/26

1,644 Sq Ft

2.0 Story

3 Beds

2.5 Baths

1 Car Garage

Primary Bedroom: Up

## About 5414 Tall Timbers Drive

**\*\$10,000 "Use As You Choose" builder incentive to be used toward closing costs, rate buydown, design studio upgrades and/or price reduction! Conditions apply—contact a builder rep. for details.**

- Step into an open and inviting great room that flows seamlessly into the dining area and kitchen—ideal for gatherings.
- The kitchen offers "Luna Pearl" granite countertops, white shaker cabinets, corner pantry, center island with a sink, ceramic tile backsplash, plus stainless steel appliances including a microwave, dishwasher, and smooth-top range.

...Read More Online

## About The Community.

Welcome to **Elliot Farms**, a peaceful Fayetteville community designed for comfort and connection. Homes range from **1,500 to 2,100 sq. ft.**, offering thoughtfully designed layouts perfect for families of all sizes.

Enjoy community amenities like a **dog park, playground, and walking trail**, making it easy to spend time outdoors and connect with neighbors.

Ideally located on the north side of Fayetteville, Elliot Farms is less than 15 minutes from Fort Bragg gates

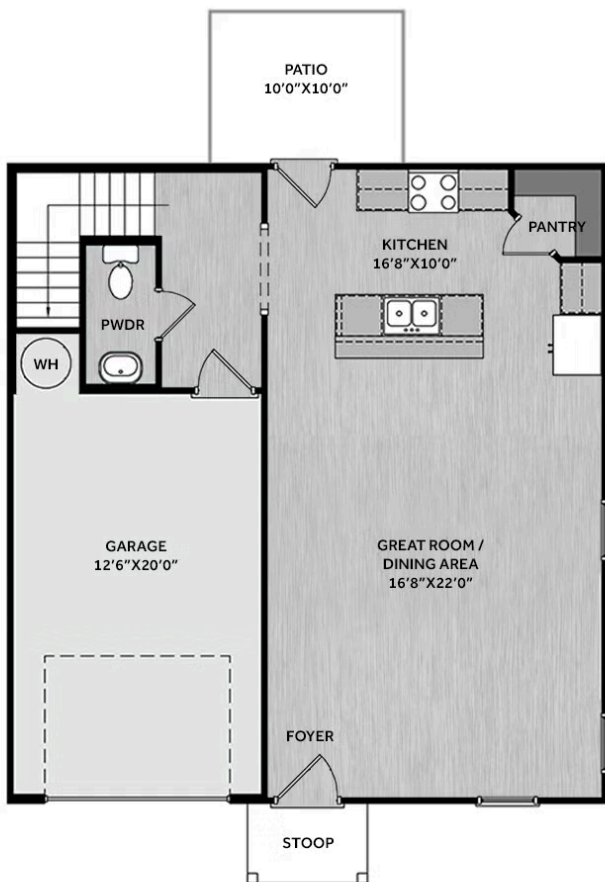


...Read More Online

Prices, plans, dimensions, features, specifications, materials, and availability of homes or communities are subject to change without notice or obligation. Illustrations are artists depictions only and may differ from completed improvements. All prices subject to change without notice. Please contact your sales associate before writing an offer.



## FIRST FLOOR



## SECOND FLOOR

