



5422 Seedling Road
Fayetteville, NC 28311

ELLIOT FARMS - BELLAMY

CONTACT OUR NEW HOME SPECIALISTS

MAGGIE & JESSICA

Call Us @ 910-405-8311

info@cavinessandcates.com



Priced

\$379,900

2,324 Sq Ft

2.0 Story

4 Beds

2.5 Baths

2 Car Garage

Primary Bedroom: Up

About 5422 Seedling Road

- First floor with flex room with french doors.
- Kitchen with island is open to breakfast area and great room, granite countertops in "Azul Platino", white shaker cabinets, subway tile backsplash in "Desert Gray" set in a brick pattern, corner pantry, and sink overlooking the backyard; Stainless dishwasher, microwave, and smooth top range.
- Covered back porch is easily accessible through breakfast

...Read More Online

About The Community.

Welcome to **Elliot Farms**, a peaceful Fayetteville community designed for comfort and connection. Homes range from **1,500 to 2,100 sq. ft.**, offering thoughtfully designed layouts perfect for families of all sizes.

Enjoy community amenities like a **dog park, playground, and walking trail**, making it easy to spend time outdoors and connect with neighbors.

Ideally located on the north side of Fayetteville, Elliot Farms is less than 15 minutes from Fort Bragg gates

Community Open House!

...Read More Online

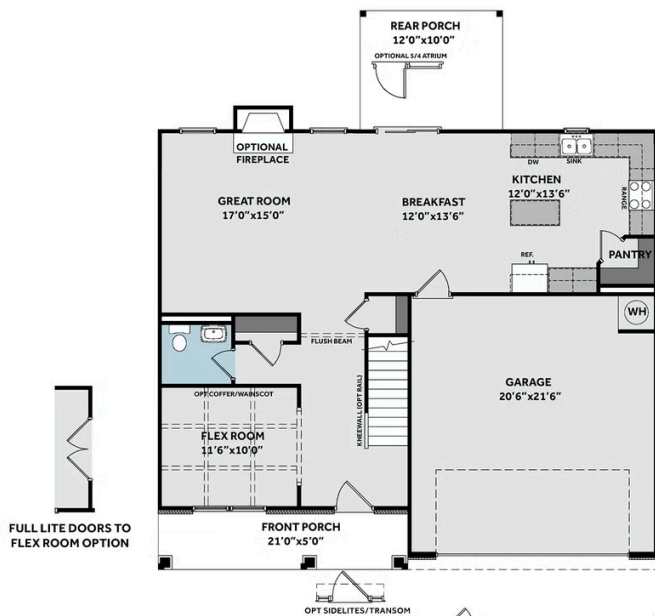
Prices, plans, dimensions, features, specifications, materials, and availability of homes or communities are subject to change without notice or obligation. Illustrations are artists depictions only and may differ from completed improvements. All prices subject to change without notice. Please contact your sales associate before writing an offer.



THE BELLAMY

CC2324

FIRST FLOOR



SECOND FLOOR

