



5513 Tall Timbers Drive
Fayetteville, NC 28311

ELLIOT FARMS - DOGWOOD

CONTACT OUR NEW HOME SPECIALISTS

MAGGIE & JESSICA

Call Us @ 910-405-8311

info@cavinessandcates.com



Priced

\$350,900

Elevation C

1,863 Sq Ft

1.0 Story

3 Beds

2.0 Baths

2 Car Garage

Primary Bedroom: Down

About 5513 Tall Timbers Drive

- This home features an open kitchen and dining area with views of the backyard, an island with a sink overlooking the great room, granite countertops in "Santa Cecilia Light," and white shaker cabinets. Stainless steel appliances, including a microwave, dishwasher, and smooth top range, complete the kitchen.
 - The spacious great room seamlessly connects to the kitchen and dining area, with the dining area offering access to the rear covered porch through sliding glass doors.
 - A separate laundry room with washer/dryer connections and luxury vinyl plank (LVP) flooring, along with a
- ...Read More Online

About The Community.

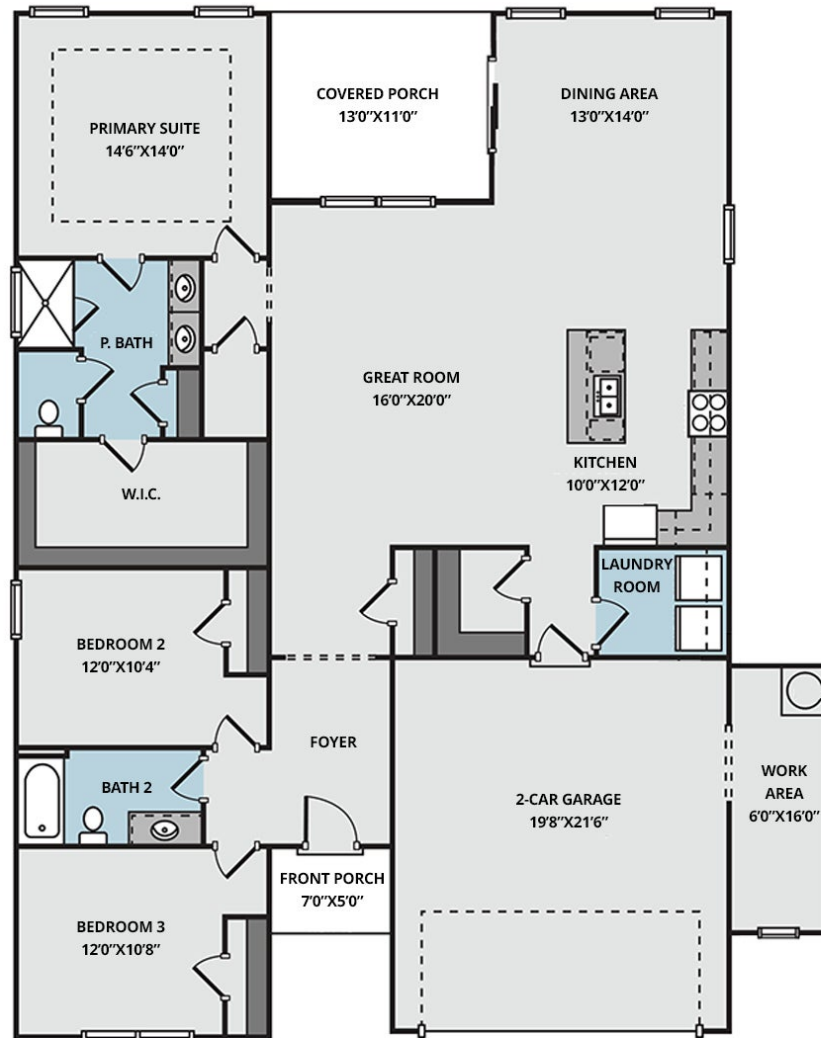
Elliot Farms is a peaceful community conveniently located near multiple metro areas! Situated on the Northside of Fayetteville, Elliot Farms is less than 15 minutes from Fort Liberty gates. Enjoy nearby local attractions like ZipQuest Waterfall & Treetop Adventures and Peaden's Seafood Restaurant. Downtown Fayetteville is just a 20 minutes drive and offers local shopping, restaurants, and attractions like the Fayetteville Woodpeckers Baseball at Segra Stadium, the Special Operations Museum, and the Cape Fear Botanical Garden. Drive North and you can visit downtown Lillington, Raven Rock State Park, and Campbell University in around 25 minutes. This community is just over an hour from the city of Raleigh and the RDU International airport.

...Read More Online

Prices, plans, dimensions, features, specifications, materials, and availability of homes or communities are subject to change without notice or obligation. Illustrations are artists depictions only and may differ from completed improvements. All prices subject to change without notice. Please contact your sales associate before writing an offer.



MAIN FLOOR



Prices, plans, dimensions, features, specifications, materials, and availability of homes or communities are subject to change without notice or obligation. Illustrations are artists depictions only and may differ from completed improvements. All prices subject to change without notice. Please contact your sales associate before writing an offer.

