



5528 Tall Timbers Drive
Fayetteville, NC 28311

ELLIOT FARMS - CAMBRIDGE

CONTACT OUR NEW HOME SPECIALISTS

MAGGIE & JESSICA

Call Us @ 910-405-8311

info@cavinessandcates.com



Priced

\$391,900

2,432 Sq Ft

1.5 Story

4 Beds

3.0 Baths

2 Car Garage

Primary Bedroom: Down

About 5528 Tall Timbers Drive

- The Cambridge home offers a spacious great room and an open kitchen with an island, featuring a sink overlooking the great room, quartz countertops in "Azul Platino," white shaker cabinets, and a pantry.
- The kitchen is equipped with stainless steel appliances, including a microwave, dishwasher, and smooth top range.
- The dining room provides views of the backyard and access to a rear-covered porch.
- The first-floor primary suite boasts a tray ceiling, crown molding, and a walk-in closet. The primary

...Read More Online

About The Community.

Welcome to **Elliot Farms**, a peaceful Fayetteville community designed for comfort and connection. Homes range from **1,600 to 2,400 sq. ft.**, offering thoughtfully designed layouts perfect for families of all sizes.

Enjoy community amenities like a **dog park, playground, and walking trail**, making it easy to spend time outdoors and connect with neighbors.

Ideally located on the north side of Fayetteville, Elliot Farms is less than 15 minutes from Fort Bragg gates

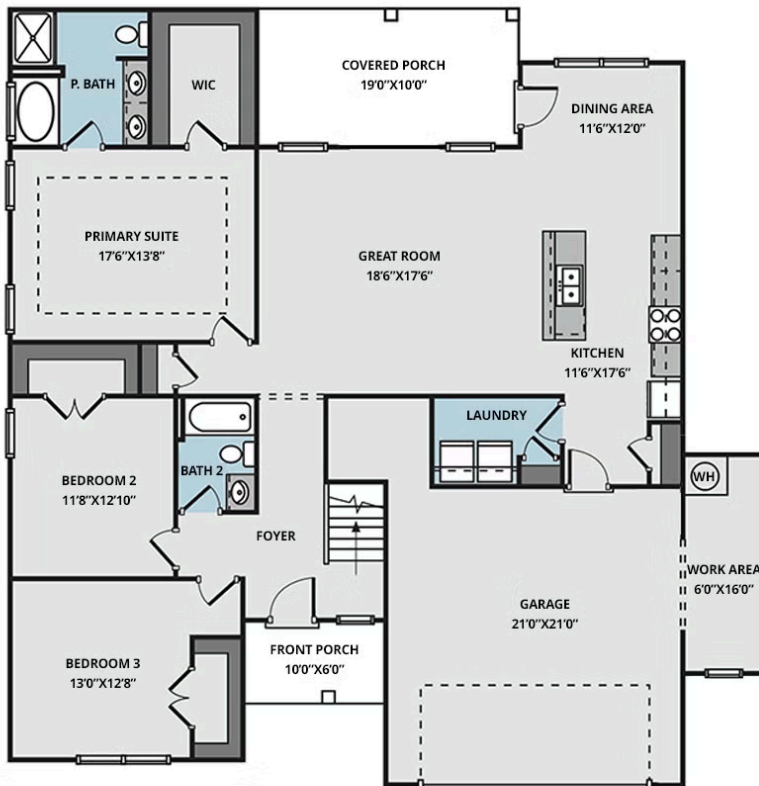


...Read More Online

Prices, plans, dimensions, features, specifications, materials, and availability of homes or communities are subject to change without notice or obligation. Illustrations are artists depictions only and may differ from completed improvements. All prices subject to change without notice. Please contact your sales associate before writing an offer.



FIRST FLOOR



SECOND FLOOR

