



5529 Tall Timbers Drive
Fayetteville, NC 28311

ELLIOT FARMS - DRAYTON

CONTACT OUR NEW HOME SPECIALISTS

MAGGIE & JESSICA

Call Us @ 910-405-8311

info@cavinessandcates.com



Priced

\$389,900

2,325 Sq Ft

2.0 Story

4 Beds

2.5 Baths

3 Car Garage

Primary Bedroom: Up

About 5529 Tall Timbers Drive

- This home features a formal dining room, off the foyer, painted in Sherwin Williams "Software".
- The spacious great room offers a cozy atmosphere, perfect for gathering and relaxing.
- Overlooking the great room and breakfast area, the kitchen is equipped with granite countertops in "Azul Platino", subway tile backsplash in "Arctic White" set in a brick pattern, white shaker cabinets, a corner pantry, and a sink with backyard views. Stainless steel appliances, including a microwave, dishwasher, and smooth top range, complete the kitchen.
- Step outside to the grill patio through sliding glass doors in the breakfast area.

...Read More Online

About The Community.

Welcome to **Elliot Farms**, a peaceful Fayetteville community designed for comfort and connection. Homes range from **1,600 to 2,400 sq. ft.**, offering thoughtfully designed layouts perfect for families of all sizes.

Enjoy community amenities like a **dog park, playground, and walking trail**, making it easy to spend time outdoors and connect with neighbors.

Ideally located on the north side of Fayetteville, Elliot Farms is less than 15 minutes from Fort Bragg gates

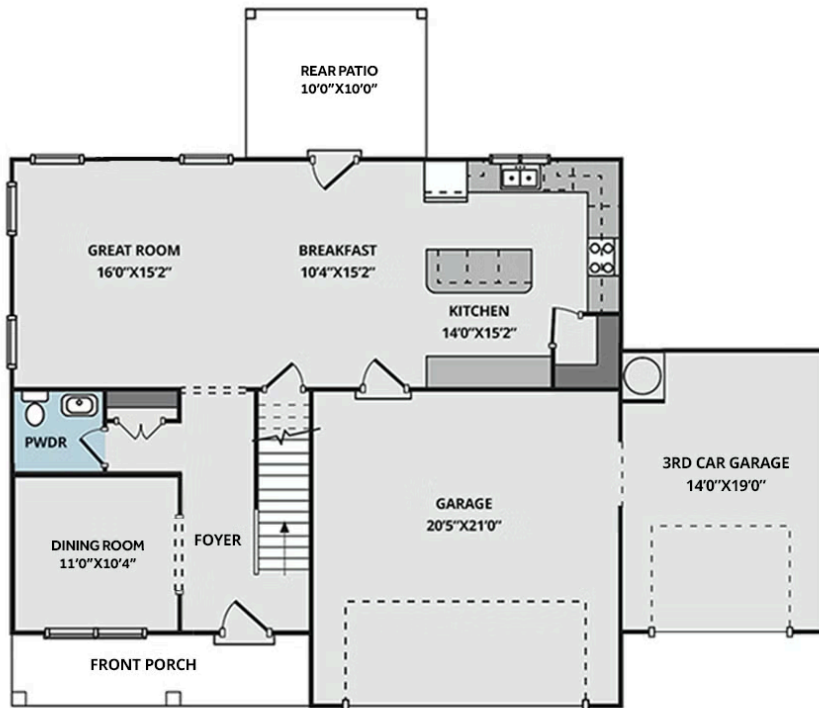
Community Open House
Saturday, November 12, 10am-2pm

...Read More Online

Prices, plans, dimensions, features, specifications, materials, and availability of homes or communities are subject to change without notice or obligation. Illustrations are artists depictions only and may differ from completed improvements. All prices subject to change without notice. Please contact your sales associate before writing an offer.



FIRST FLOOR



SECOND FLOOR

