



5536 Tall Timbers Drive  
Fayetteville, NC 28311  
**ELLIOT FARMS - SPRINGFIELD**

CONTACT OUR NEW HOME SPECIALISTS  
**MAGGIE & JESSICA**  
Call Us @ 910-405-8311  
info@cavinessandcates.com



**Priced**

**\$352,800**

1,884 Sq Ft

2.0 Story

4 Beds

2.5 Baths

3 Car Garage

Primary Bedroom: Up

## About 5536 Tall Timbers Drive

**\*\$5,000 Builder Credit - to be used towards closing costs, rate buydown, or design studio upgrades! Conditions apply. Please see builder representative for details.**

- This home features a great room with a corner gas log fireplace with decorative mantle and granite surround in "Absolute Black".
- Rear covered porch creates the perfect outdoor space and is easily accessible through the great

**\$5,000 BUILDER CREDIT**

**BlueTago**

[...Read More Online](#)

## About The Community.

Elliot Farms is a peaceful community conveniently located near multiple metro areas! Situated on the Northside of Fayetteville, Elliot Farms is less than 15 minutes from Fort Liberty gates. Enjoy nearby local attractions like ZipQuest Waterfall & Treetop Adventures and Peaden's Seafood Restaurant. Downtown Fayetteville is just a 20 minutes drive and offers local shopping, restaurants, and attractions like the Fayetteville Woodpeckers Baseball at Segra Stadium, the Special Operations Museum, and the Cape Fear Botanical Garden. Drive North and you can visit downtown Lillington, Raven Rock State Park, and Campbell University in around 25 minutes. This community is just over an hour from the city of Raleigh and the RDU International airport.

[...Read More Online](#)

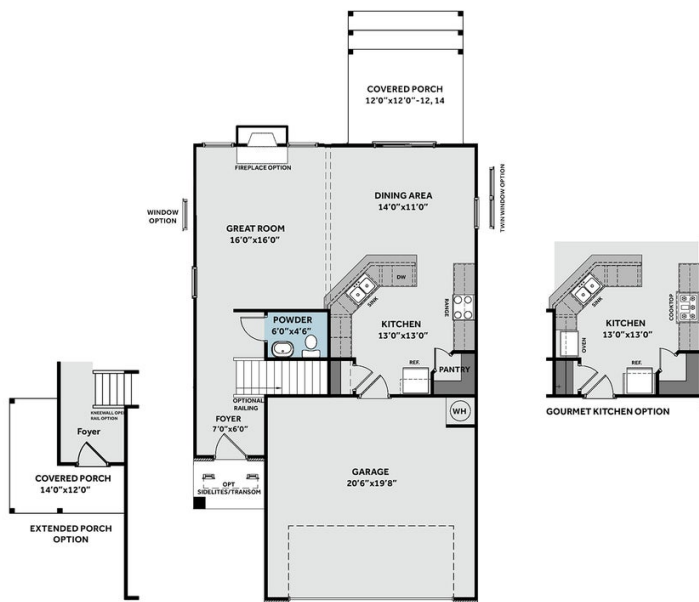
Prices, plans, dimensions, features, specifications, materials, and availability of homes or communities are subject to change without notice or obligation. Illustrations are artists depictions only and may differ from completed improvements. All prices subject to change without notice. Please contact your sales associate before writing an offer.



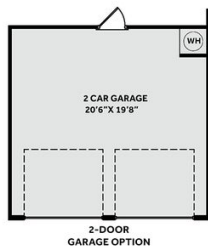
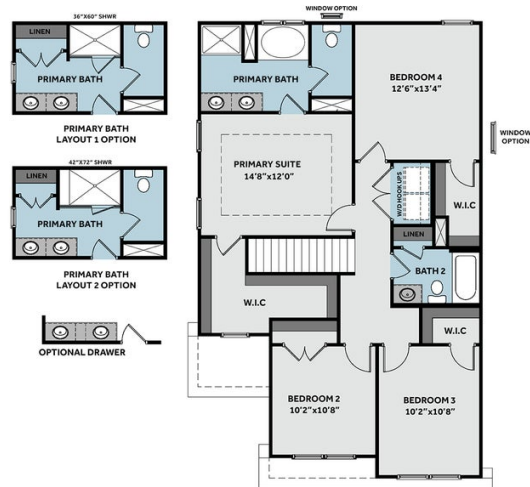
## THE SPRINGFIELD

CC1884

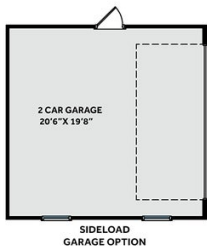
### FIRST FLOOR



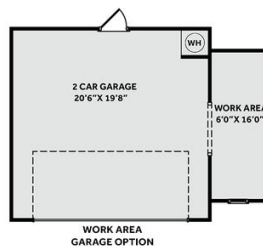
### SECOND FLOOR



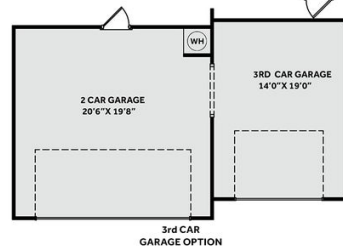
2-DOOR  
GARAGE OPTION



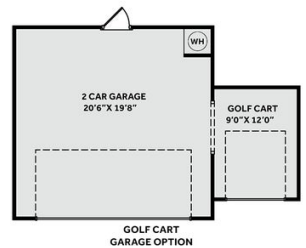
SIDELOAD  
GARAGE OPTION



WORK AREA  
GARAGE OPTION



3rd CAR  
GARAGE OPTION



GOLF CART  
GARAGE OPTION