



5540 Tall Timbers Drive
Fayetteville, NC 28311

ELLIOT FARMS - CAMBRIDGE

CONTACT OUR NEW HOME SPECIALISTS

MAGGIE & JESSICA

Call Us @ 910-405-8311

info@cavinessandcates.com



Priced

\$398,000

2,432 Sq Ft

1.5 Story

4 Beds

3.0 Baths

2 Car Garage

Primary Bedroom: Down

About 5540 Tall Timbers Drive

- Great room with gas log fireplace with decorative mantle and granite surround in "Absolute Back".
- Open kitchen with island with sink overlooking the great room, granite countertops in "Sanat Cecilia Light", subway tile backsplash in "Arctic White" set in a brick pattern, white shaker cabinets, and pantry; Stainless steel microwave, dishwasher, and smooth top range.
- Dining room with views to the backyard and access to rear covered porch.
- Primary suite on first floor with tray ceiling and crown molding and walk-in closet; Primary bath with dual sinks with quartz countertop in "Niagara", white shaker cabinets with center drawer stack,

...Read More Online

About The Community.

Welcome to **Elliot Farms**, a peaceful Fayetteville community designed for comfort and connection. Homes range from **1,500 to 2,100 sq. ft.**, offering thoughtfully designed layouts perfect for families of all sizes.

Enjoy community amenities like a **dog park, playground, and walking trail**, making it easy to spend time outdoors and connect with neighbors.

Ideally located on the north side of Fayetteville, Elliot Farms is less than 15 minutes from Fort Bragg gates

Community Open House!

...Read More Online

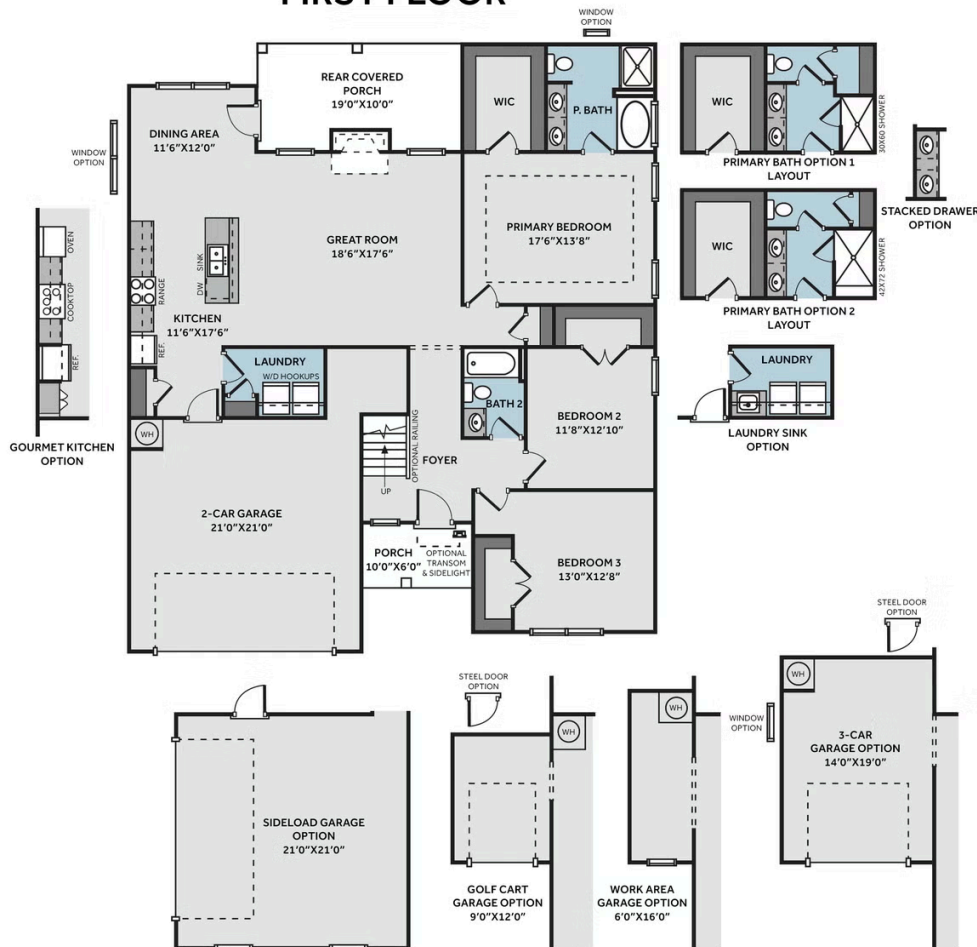
Prices, plans, dimensions, features, specifications, materials, and availability of homes or communities are subject to change without notice or obligation. Illustrations are artists depictions only and may differ from completed improvements. All prices subject to change without notice. Please contact your sales associate before writing an offer.



THE CAMBRIDGE

CC1850

FIRST FLOOR



SECOND FLOOR

