



5540 Tall Timbers Drive
Fayetteville, NC 28311

ELLIOT FARMS - CAMBRIDGE

CONTACT OUR NEW HOME SPECIALISTS

MAGGIE & JESSICA

Call Us @ 910-405-8311

info@cavinessandcates.com



Priced

\$398,000

2,432 Sq Ft

1.5 Story

4 Beds

3.0 Baths

2 Car Garage

Primary Bedroom: Down

About 5540 Tall Timbers Drive

- Great room with gas log fireplace with decorative mantle and granite surround in "Absolute Back".
- Open kitchen with island with sink overlooking the great room, granite countertops in "Sanat Cecilia Light", subway tile backsplash in "Arctic White" set in a brick pattern, white shaker cabinets, and pantry; Stainless steel microwave, dishwasher, and smooth top range.
- Dining room with views to the backyard and access to rear covered porch.
- Primary suite on first floor with tray ceiling and crown molding and walk-in closet; Primary bath with dual sinks with quartz countertop in "Niagara", white shaker cabinets with center drawer stack,

...Read More Online

About The Community.

Elliot Farms is a peaceful community conveniently located near multiple metro areas! Situated on the Northside of Fayetteville, Elliot Farms is less than 15 minutes from Fort Liberty gates. Enjoy nearby local attractions like ZipQuest Waterfall & Treetop Adventures and Peaden's Seafood Restaurant. Downtown Fayetteville is just a 20 minutes drive and offers local shopping, restaurants, and attractions like the Fayetteville Woodpeckers Baseball at Segra Stadium, the Special Operations Museum, and the Cape Fear Botanical Garden. Drive North and you can visit downtown Lillington, Raven Rock State Park, and Campbell University in around 25 minutes. This community is just over an hour from the city of Raleigh and the RDU International airport.

...Read More Online

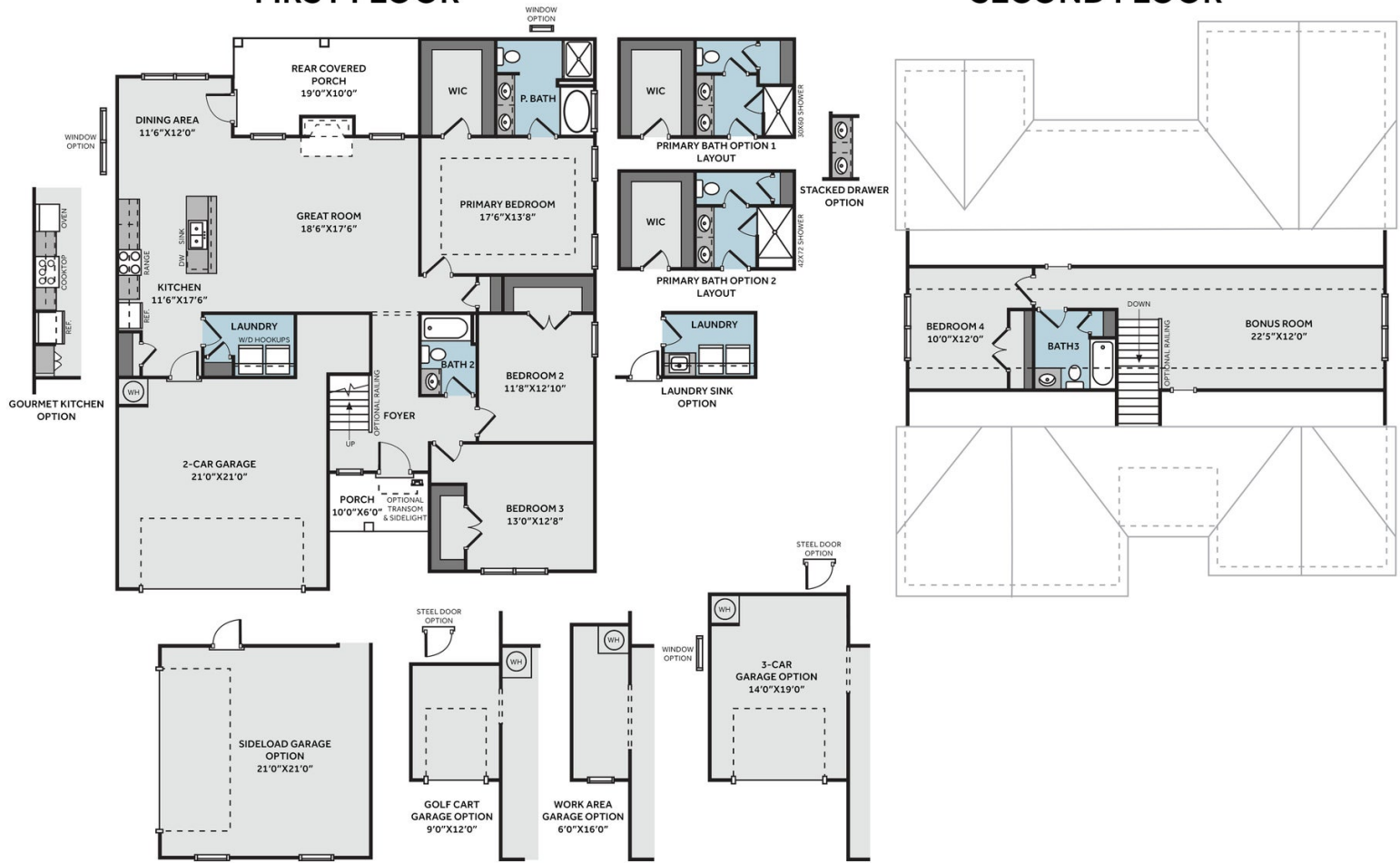
Prices, plans, dimensions, features, specifications, materials, and availability of homes or communities are subject to change without notice or obligation. Illustrations are artists depictions only and may differ from completed improvements. All prices subject to change without notice. Please contact your sales associate before writing an offer.



THE CAMBRIDGE
CC1850

FIRST FLOOR

SECOND FLOOR



Prices, plans, dimensions, features, specifications, materials, and availability of homes or communities are subject to change without notice or obligation. Illustrations are artists depictions only and may differ from completed improvements. All prices subject to change without notice. Please contact your sales associate before writing an offer.

