



5544 Tall Timbers Drive  
Fayetteville, NC 28311

ELLIOT FARMS - BRUNSWICK

CONTACT OUR NEW HOME SPECIALISTS

**MAGGIE & JESSICA**

Call Us @ 910-405-8311

info@cavinessandcates.com



**Priced**

**\$398,000**

2,355 Sq Ft

2.0 Story

4 Beds

2.5 Baths

2 Car Garage

Primary Bedroom: Up

## About 5544 Tall Timbers Drive

- The entrance of this 2 story home showcases a 2 story ceiling with hanging light fixture.
- Great room with gas log fireplace with decorative mantle and granite surround in "Absolute Black".
- Covered porch creates the perfect outdoor space and is easily accessible through the breakfast area.
- Eat-in kitchen with large island overlooking the great room, granite countertops in "Luna Pearl", subway tile backsplash in "Desert Gray" set in a herringbone pattern, white shaker cabinets, walk-in pantry, built-in desk space, and window over kitchen sink with views to the backyard; Stainless

...Read More Online

## About The Community.

Welcome to **Elliot Farms**, a peaceful Fayetteville community designed for comfort and connection. Homes range from **1,500 to 2,100 sq. ft.**, offering thoughtfully designed layouts perfect for families of all sizes.

Enjoy community amenities like a **dog park, playground, and walking trail**, making it easy to spend time outdoors and connect with neighbors.

Ideally located on the north side of Fayetteville, Elliot Farms is less than 15 minutes from Fort Bragg gates

Community Open House!

...Read More Online

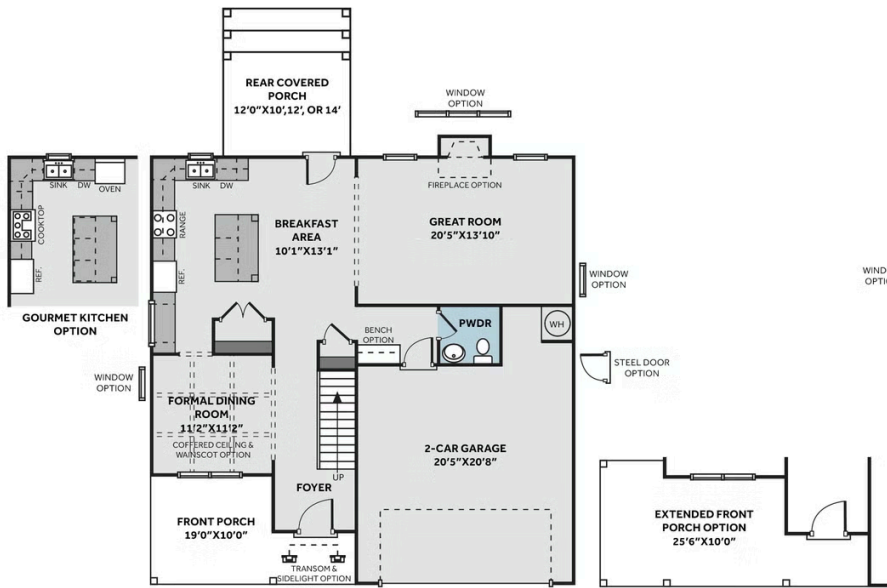
Prices, plans, dimensions, features, specifications, materials, and availability of homes or communities are subject to change without notice or obligation. Illustrations are artists depictions only and may differ from completed improvements. All prices subject to change without notice. Please contact your sales associate before writing an offer.



## THE BRUNSWICK

CC2355

### FIRST FLOOR



### SECOND FLOOR

