



5544 Tall Timbers Drive
Fayetteville, NC 28311

ELLIOT FARMS - BRUNSWICK

CONTACT OUR NEW HOME SPECIALISTS

MAGGIE & JESSICA

Call Us @ 910-405-8311

info@cavinessandcates.com



Priced

\$398,000

2,355 Sq Ft

2.0 Story

4 Beds

2.5 Baths

2 Car Garage

Primary Bedroom: Up

About 5544 Tall Timbers Drive

- The entrance of this 2 story home showcases a 2 story ceiling with hanging light fixture.
- Great room with gas log fireplace with decorative mantle and granite surround in "Absolute Black".
- Covered porch creates the perfect outdoor space and is easily accessible through the breakfast area.
- Eat-in kitchen with large island overlooking the great room, granite countertops in "Luna Pearl", subway tile backsplash in "Desert Gray" set in a herringbone pattern, white shaker cabinets, walk-in pantry, built-in desk space, and window over kitchen sink with views to the backyard; Stainless

...Read More Online

About The Community.

Elliot Farms is a peaceful community conveniently located near multiple metro areas! Situated on the Northside of Fayetteville, Elliot Farms is less than 15 minutes from Fort Liberty gates. Enjoy nearby local attractions like ZipQuest Waterfall & Treetop Adventures and Peaden's Seafood Restaurant. Downtown Fayetteville is just a 20 minutes drive and offers local shopping, restaurants, and attractions like the Fayetteville Woodpeckers Baseball at Segra Stadium, the Special Operations Museum, and the Cape Fear Botanical Garden. Drive North and you can visit downtown Lillington, Raven Rock State Park, and Campbell University in around 25 minutes. This community is just over an hour from the city of Raleigh and the RDU International airport.

...Read More Online

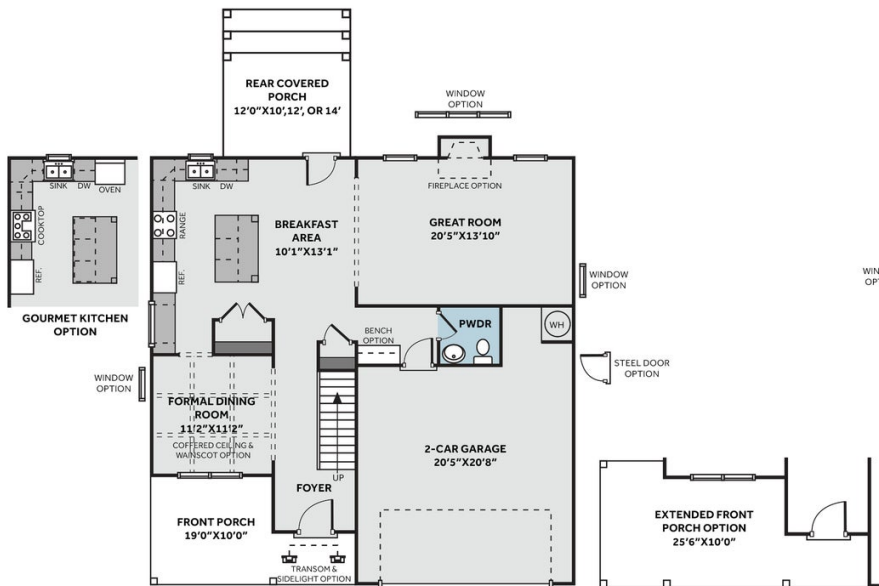
Prices, plans, dimensions, features, specifications, materials, and availability of homes or communities are subject to change without notice or obligation. Illustrations are artists depictions only and may differ from completed improvements. All prices subject to change without notice. Please contact your sales associate before writing an offer.



THE BRUNSWICK

CC2355

FIRST FLOOR



SECOND FLOOR

