



5556 Tall Timbers Drive
Fayetteville, NC 28311

ELLIOT FARMS - MEADOWBROOK

CONTACT OUR NEW HOME SPECIALISTS

MAGGIE & JESSICA

Call Us @ 910-405-8311

info@cavinessandcates.com



Priced

\$359,900

Elevation F

1,997 Sq Ft

2.0 Story

3 Beds

2.5 Baths

2 Car Garage

Primary Bedroom: Up

About 5556 Tall Timbers Drive

- Great room with gas fireplace with decorative mantle and granite surround in "Absolute Black"
- Backyard of home with covered porch.
- Kitchen open to great room with bar seating, quartz countertops in "Arctic White", white shaker cabinets, natural stone mosaic herringbone tile backsplash, pantry, and sink overlooking backyard; Stainless steel microwave, dishwasher, and smooth top range.
- Formal Dining room painted in Sherwin Williams "Moody Blue" with coffered ceiling and wainscoting detail.

...Read More Online

About The Community.

Welcome to **Elliot Farms**, a peaceful Fayetteville community designed for comfort and connection. Homes range from **1,500 to 2,100 sq. ft.**, offering thoughtfully designed layouts perfect for families of all sizes.

Enjoy community amenities like a **dog park, playground, and walking trail**, making it easy to spend time outdoors and connect with neighbors.

Ideally located on the north side of Fayetteville, Elliot Farms is less than 15 minutes from Fort Bragg gates

Community Open House!

...Read More Online

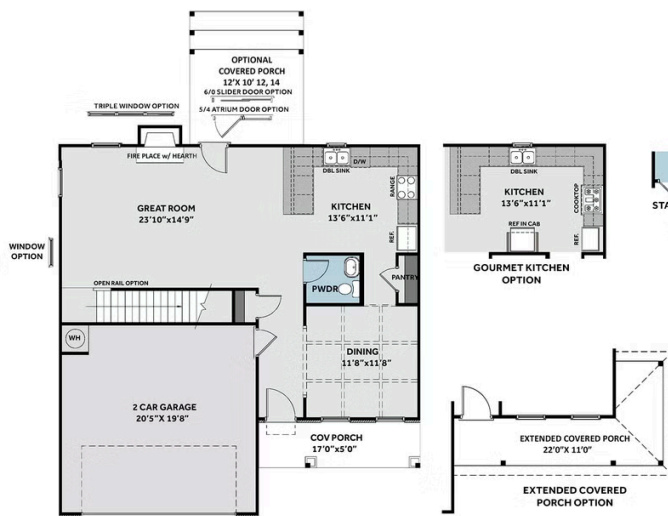
Prices, plans, dimensions, features, specifications, materials, and availability of homes or communities are subject to change without notice or obligation. Illustrations are artists depictions only and may differ from completed improvements. All prices subject to change without notice. Please contact your sales associate before writing an offer.



THE MEADOWBROOK

CC1997

FIRST FLOOR



SECOND FLOOR

