



5567 Tall Timbers Drive  
Fayetteville, NC 28311

**ELLIOT FARMS - BRUNSWICK**

CONTACT OUR NEW HOME SPECIALISTS

**MAGGIE & JESSICA**

Call Us @ 910-405-8311

info@cavinessandcates.com



2,355 Sq Ft

2.0 Story

4 Beds

2.5 Baths

2 Car Garage

Primary Bedroom: Up

## About 5567 Tall Timbers Drive

The open-concept Brunswick home plan gets its name from the coastal Brunswick County, NC!

- The entrance of this 2 story home showcases a 2 story ceiling with hanging light fixture.
- Eat-in kitchen with large island, walk-in pantry, built-in desk space, and window over kitchen sink with views to the backyard; Gourmet kitchen appliance layout option
- Covered rear porch creates the perfect outdoor space.
- Great room with optional gas log fireplace and additional window option
- Elegant formal dining room with stunning coffered ceiling and wainscoting detail options

...Read More Online

## About The Community.

Elliot Farms is a peaceful community with a community Tot Lot, Dog Park, and Walking Trail tucked away in the North Side of Fayetteville! Your new home is less than 15 minutes from Fort Bragg gates. Enjoy nearby local attractions like ZipQuest Waterfall & Treetop Adventures and Peaden's Seafood Restaurant. Downtown Fayetteville is just a 20 minutes drive and offers local shopping, restaurants, and attractions like the Fayetteville Woodpeckers Baseball at Segra Stadium, the Special Operations Museum, and the Cape Fear Botanical Garden. Drive North and you can visit downtown Lillington, Raven Rock State Park,

Community Open House! [maggieandjessica.com](http://maggieandjessica.com)



...Read More Online

Prices, plans, dimensions, features, specifications, materials, and availability of homes or communities are subject to change without notice or obligation. Illustrations are artists depictions only and may differ from completed improvements. All prices subject to change without notice. Please contact your sales associate before writing an offer.

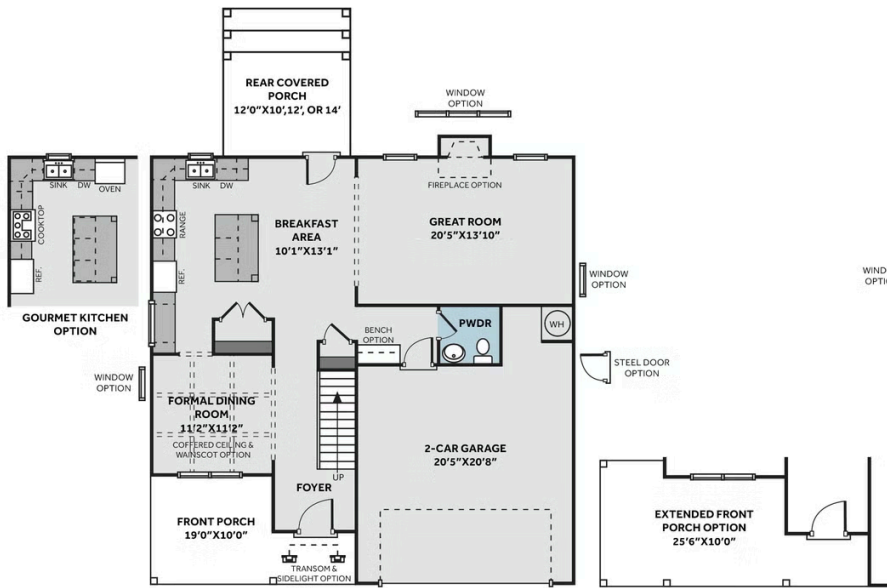


ARCHIVED 10/30/2023

## THE BRUNSWICK

CC2355

### FIRST FLOOR



### SECOND FLOOR

