



5571 Tall Timbers Drive  
Fayetteville, NC 28311

ELLIOT FARMS - DRAYTON

CONTACT OUR NEW HOME SPECIALISTS

**MAGGIE & JESSICA**

Call Us @ 910-405-8311

info@cavinessandcates.com



**Priced**

**\$379,900**

2,325 Sq Ft

2.0 Story

4 Beds

2.5 Baths

2 Car Garage

Primary Bedroom: Up

## About 5571 Tall Timbers Drive

- First floor with formal dining room painted in Sherwin Williams "Software" with picture frame wainscoting detail and coffered ceiling detail.
- Kitchen with island is open to breakfast area and great room, granite countertops in "Azul Platino", natural stone mosaic backsplash, white shaker cabinets, and corner pantry; Stainless steel microwave, dishwasher, and smooth top range.
- Covered porch makes for the perfect outdoor space and is easily accessible through the breakfast area!

...Read More Online

## About The Community.

Welcome to **Elliot Farms**, a peaceful Fayetteville community designed for comfort and connection. Homes range from **1,600 to 2,400 sq. ft.**, offering thoughtfully designed layouts perfect for families of all sizes.

Enjoy community amenities like a **dog park, playground, and walking trail**, making it easy to spend time outdoors and connect with neighbors.

Ideally located on the north side of Fayetteville, Elliot Farms is less than 15 minutes from Fort Bragg gates

Community Open House

...Read More Online

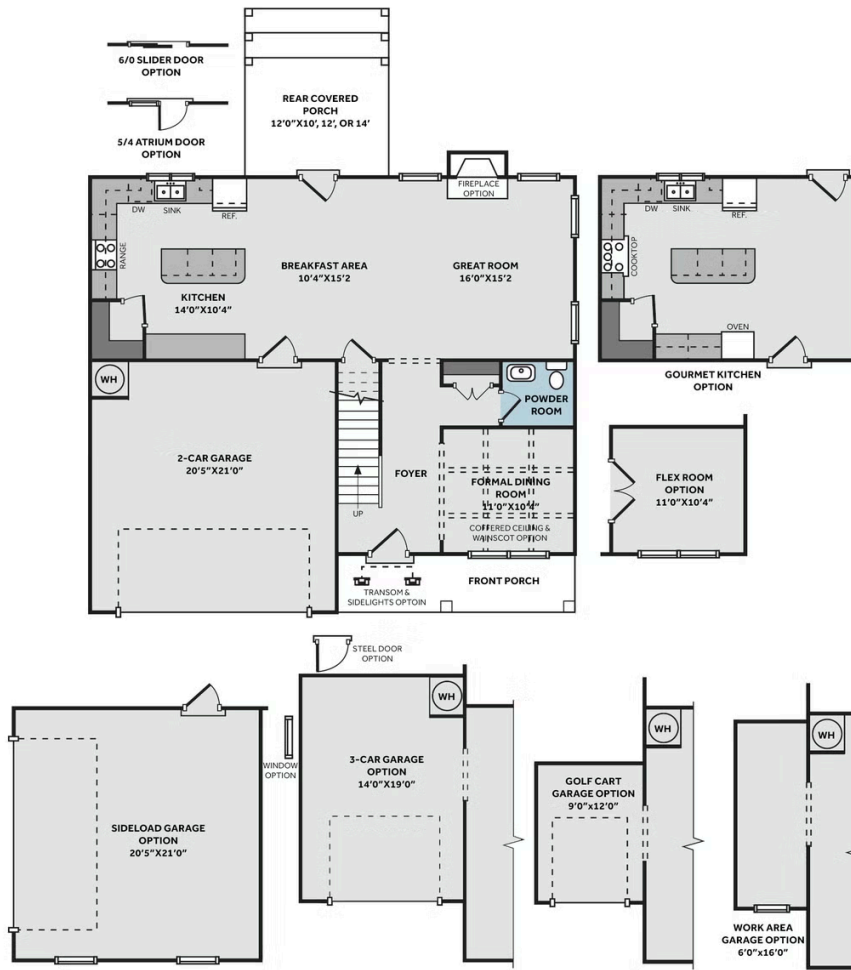
Prices, plans, dimensions, features, specifications, materials, and availability of homes or communities are subject to change without notice or obligation. Illustrations are artists depictions only and may differ from completed improvements. All prices subject to change without notice. Please contact your sales associate before writing an offer.



## THE DRAYTON

CC2325

### FIRST FLOOR



### SECOND FLOOR

