



5575 Tall Timbers Drive
Fayetteville, NC 28311

ELLIOT FARMS - MAGNOLIA

CONTACT OUR NEW HOME SPECIALISTS

MAGGIE & JESSICA

Call Us @ 910-405-8311

info@cavinessandcates.com



Priced

\$419,900

2,642 Sq Ft

2.0 Story

4 Beds

2.5 Baths

3 Car Garage

Primary Bedroom: Up

About 5575 Tall Timbers Drive

- Flex Room with full lite french doors off the foyer.
- Open Great Room with corner fireplace with decorative mantle and granite surround in "Absolute Black; Access to covered porch through sliding glass door off of the great room.
- Kitchen with island and breakfast area, granite countertops in "Santa Cecilia Light", subway tile backsplash in "Arctic White" set in a brick pattern, white shaker cabinets, sink with views to the backyard, and corner pantry; Stainless steel microwave, dishwasher, and smooth top range.
- Built-in coat station and half-bath with pedestal sink, oval mirror, and tile flooring are located by the

...Read More Online

About The Community.

Elliot Farms is a peaceful community conveniently located near multiple metro areas! Situated on the Northside of Fayetteville, Elliot Farms is less than 15 minutes from Fort Liberty gates. Enjoy nearby local attractions like ZipQuest Waterfall & Treetop Adventures and Peaden's Seafood Restaurant. Downtown Fayetteville is just a 20 minutes drive and offers local shopping, restaurants, and attractions like the Fayetteville Woodpeckers Baseball at Segra Stadium, the Special Operations Museum, and the Cape Fear Botanical Garden. Drive North and you can visit downtown Lillington, Raven Rock State Park, and Campbell University in around 25 minutes. This community is just over an hour from the city of Raleigh and the RDU International airport.

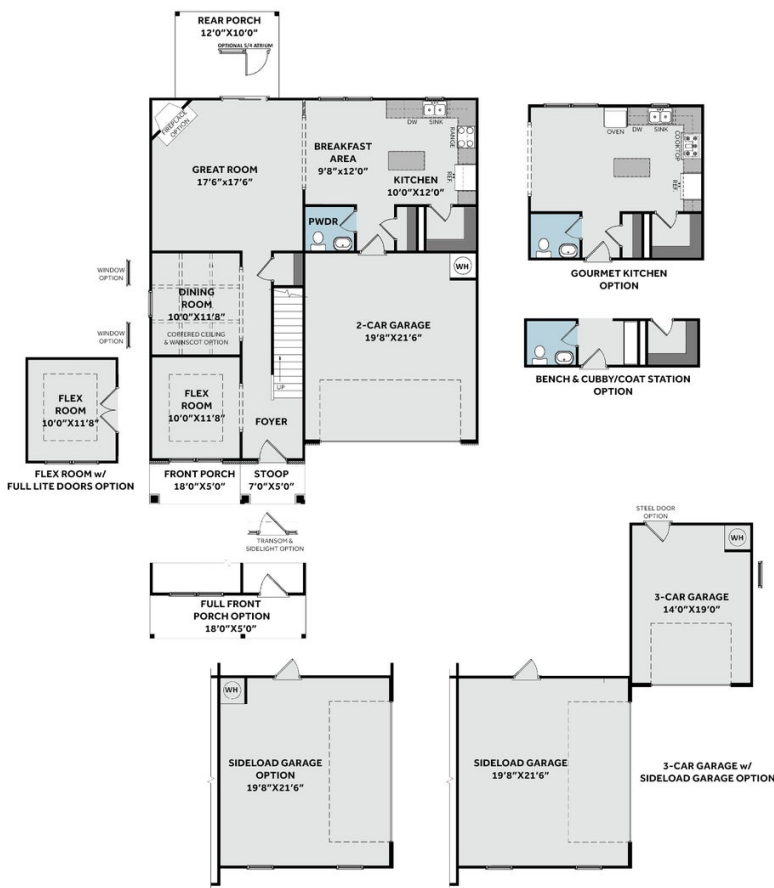
...Read More Online

Prices, plans, dimensions, features, specifications, materials, and availability of homes or communities are subject to change without notice or obligation. Illustrations are artists depictions only and may differ from completed improvements. All prices subject to change without notice. Please contact your sales associate before writing an offer.

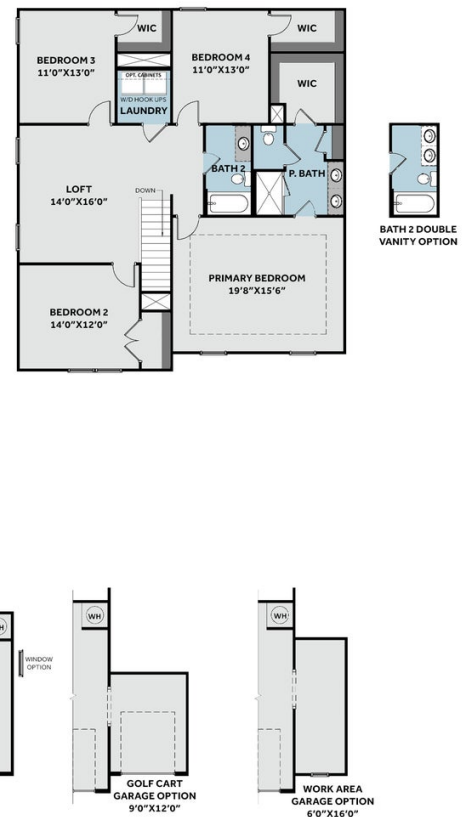


THE MAGNOLIA
CC2642

FIRST FLOOR



SECOND FLOOR



Prices, plans, dimensions, features, specifications, materials, and availability of homes or communities are subject to change without notice or obligation. Illustrations are artists depictions only and may differ from completed improvements. All prices subject to change without notice. Please contact your sales associate before writing an offer.

