



5666 Tall Timbers Drive
Fayetteville, NC 28311

ELLIOT FARMS - SPRINGFIELD

CONTACT OUR NEW HOME SPECIALISTS

MAGGIE & JESSICA

Call Us @ 910-405-8311

info@cavinessandcates.com



Priced

\$319,900

1,884 Sq Ft

2.0 Story

4 Beds

2.5 Baths

2 Car Garage

Primary Bedroom: Up

About 5666 Tall Timbers Drive

- The Springfield floorplan boasts a spacious great room that seamlessly connects to the kitchen and dining area, creating a welcoming and open living space.
- A grill patio, easily accessible through sliding doors in the great room, offers the perfect outdoor retreat.
- The kitchen features a sink overlooking the great room, granite countertops in "Luna Pearl," white shaker cabinets, a corner pantry, and an open dining area with backyard views, along with stainless steel appliances including a microwave, dishwasher, and smooth top range.

[...Read More Online](#)

About The Community.

Welcome to **Elliot Farms**, a peaceful Fayetteville community designed for comfort and connection. Homes range from **1,500 to 2,100 sq. ft.**, offering thoughtfully designed layouts perfect for families of all sizes.

Enjoy community amenities like a **dog park, playground, and walking trail**, making it easy to spend time outdoors and connect with neighbors.

Ideally located on the north side of Fayetteville, Elliot Farms is less than 15 minutes from Fort Bragg gates

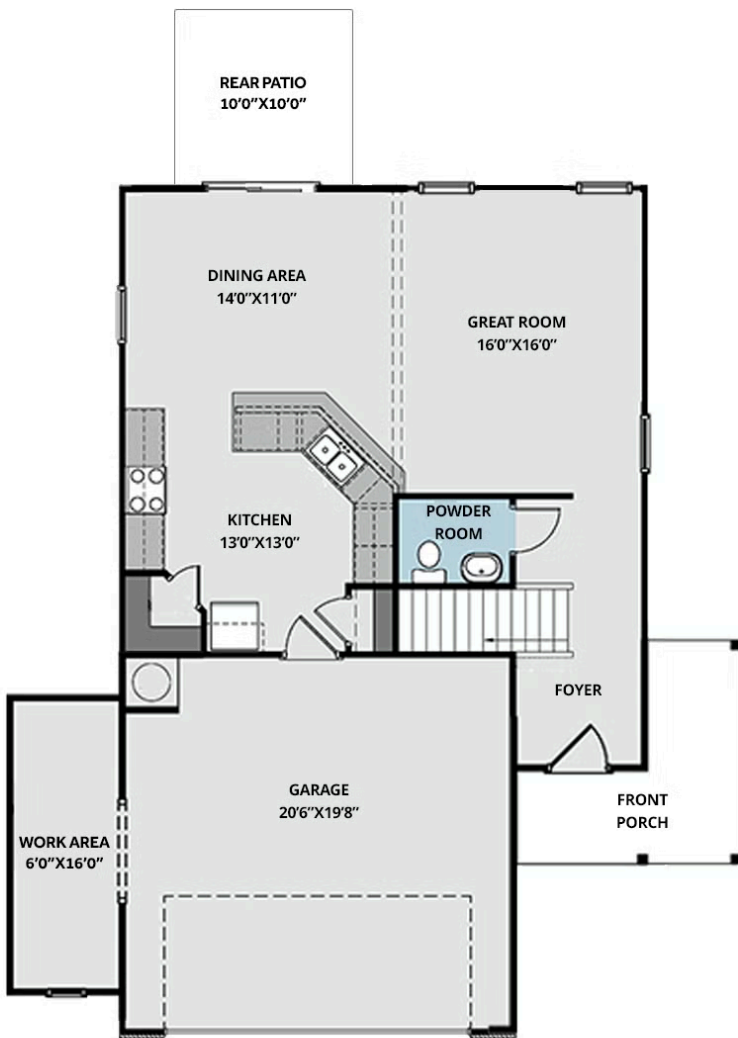
Community Open House!

[...Read More Online](#)

Prices, plans, dimensions, features, specifications, materials, and availability of homes or communities are subject to change without notice or obligation. Illustrations are artists depictions only and may differ from completed improvements. All prices subject to change without notice. Please contact your sales associate before writing an offer.



FIRST FLOOR



SECOND FLOOR

