



2,355 Sq. Ft.

2 Stories

4 Bed

2.5 Bath

2 - 3 Garage

Primary Bed: Up

About Brunswick

The open-concept Brunswick home plan gets its name from the coastal Brunswick County, NC!

- The entrance of this 2 story home showcases a 2 story ceiling with hanging light fixture.
- Eat-in kitchen with large island, walk-in pantry, built-in desk space, and window over kitchen sink with views to the backyard; Gourmet kitchen appliance layout option
- Optional covered porch and/or grill patio create a perfect outdoor space
- Great room with optional gas log fireplace and additional window option
- Elegant formal dining room with stunning coffered ceiling and wainscoting detail options

...Read More Online



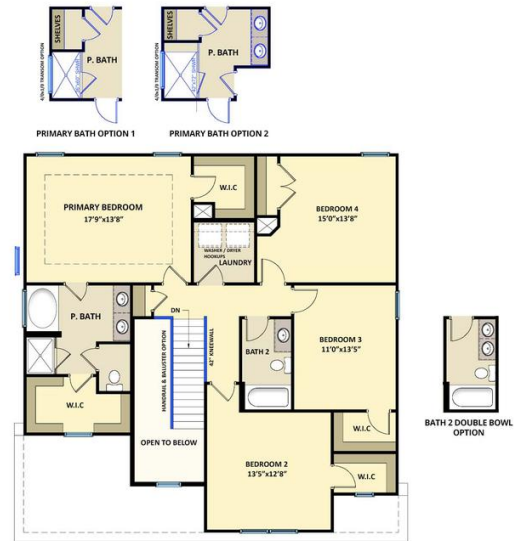
Elevation K

The Brunswick
CC2355

FIRST FLOOR



SECOND FLOOR



Prices, plans, dimensions, features, specifications, materials, and availability of homes or communities are subject to change without notice or obligation. Illustrations are artists depictions only and may differ from completed improvements. All prices subject to change without notice. Please contact your sales associate before writing an offer.

