



4723 Silver Maple Drive
Fayetteville, NC 28314

LITTLE RIVER FARMS - DRAYTON

CONTACT OUR NEW HOME SPECIALISTS

MAGGIE & JESSICA

Call Us @ 910-405-8311

info@cavinessandcates.com



Priced

\$354,900

Elevation D

2,325 Sq Ft

2.0 Story

4 Beds

2.5 Baths

2 Car Garage

Primary Bedroom: Up

About 4723 Silver Maple Drive

- Great room with gas fireplace with decorative mantle and granite surround in "Absolute Black".
- Kitchen open to breakfast area and great room with island, Seattle "Snow" shaker cabinets, granite countertops in "New Caledonia", tile backsplash set in a brick pattern in "Arctic White", and corner pantry; Stainless steel microwave, dishwasher and smooth top range.
- First floor with formal dining room with picture frame wainscoting detail and coffered ceiling.

...Read More Online

About The Community.

Little River Farms is located less than 5 minutes from the new I-295 making your drive to Fayetteville or Fort Liberty a breeze! Your local area includes Lake Rim Park less than a 5 minutes drive and local groceries and shopping right down the street. Be in downtown Fayetteville for local shops, restaurants, and festivities in just 25 minutes.

...Read More Online

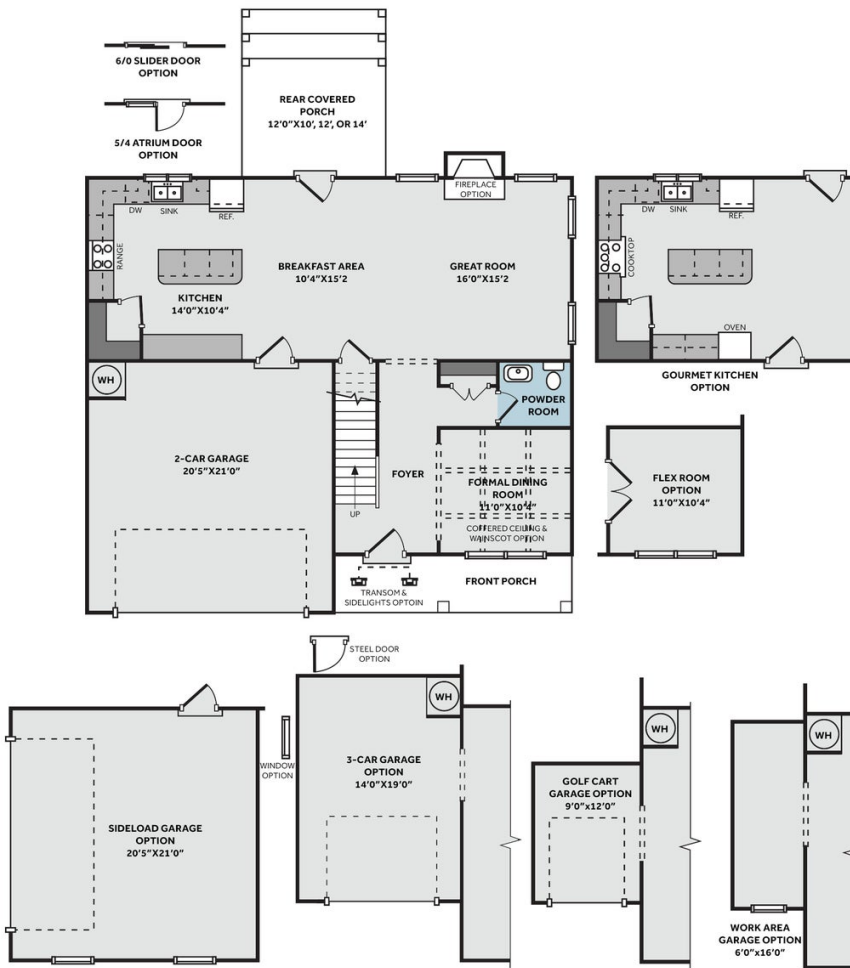
Prices, plans, dimensions, features, specifications, materials, and availability of homes or communities are subject to change without notice or obligation. Illustrations are artists depictions only and may differ from completed improvements. All prices subject to change without notice. Please contact your sales associate before writing an offer.



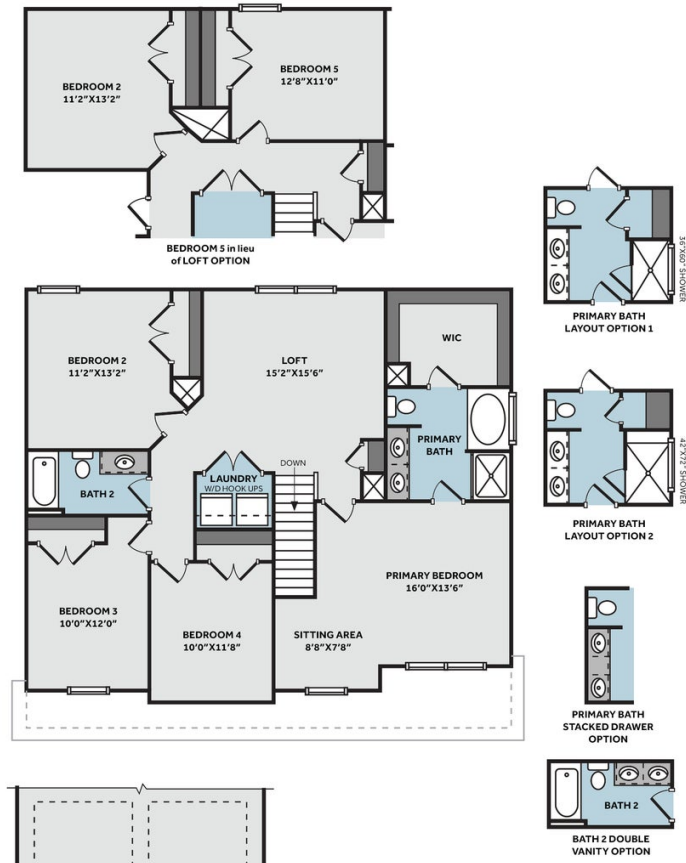
THE DRAYTON

CC2325

FIRST FLOOR



SECOND FLOOR



Prices, plans, dimensions, features, specifications, materials, and availability of homes or communities are subject to change without notice or obligation. Illustrations are artists depictions only and may differ from completed improvements. All prices subject to change without notice. Please contact your sales associate before writing an offer.

