



3,156 Sq. Ft.

2 Stories

5 Bed

3.0 Bath

2 - 3 Garage

Master Bed: Up

## About Roanoke

This home features an upstairs AND downstairs front porch!

- Formal dining room with coffered ceiling and wainscoting detail option
- Butler pantry or desk option and walk-in pantry
- Kitchen with optional bar seating - gourmet kitchen option with double wall ovens and cooktop
- Open great room with fireplace option and built-in bookshelf option
- Breakfast area with access to covered porch or patio options.
- Guest room or flex room on first floor

...Read More Online



Elevation KS

The Roanoke  
CC3156

FIRST FLOOR

SECOND FLOOR

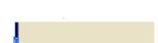
REAR COVERED PORCH OPTION



OPTIONAL 6/0 SLIDING DOOR



OPTIONAL 5/4 ATRIUM DOOR

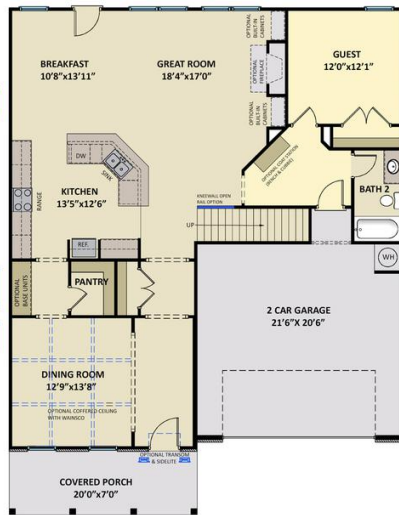


GOURMET KITCHEN OPTION

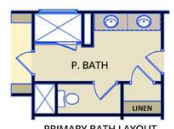
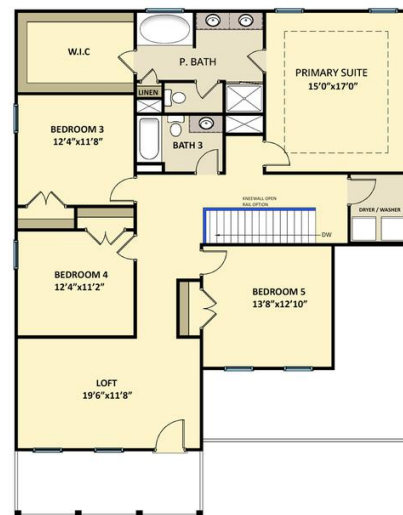
WINDOW OPTION

WINDOW OPTION

WINDOW OPTION



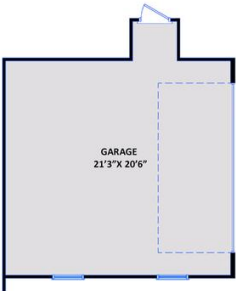
OPTIONAL STEEL DOOR



PRIMARY BATH LAYOUT OPTION 1



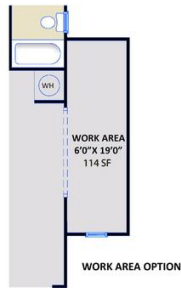
PRIMARY BATH LAYOUT OPTION 2



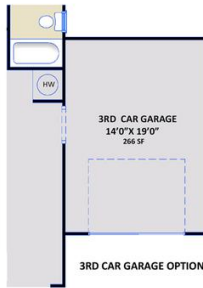
SIDE LOAD GARAGE OPTION



GOLF CART OPTION



WORK AREA OPTION



3RD CAR GARAGE OPTION



TWO DOOR GARAGE