



Halifax

MODEL HOME ADDRESS

328 Nantahala Lake Way
Fuquay-Varina, NC 27526

CONTACT OUR NEW HOME SPECIALIST

JENN HUNTOON

Call Us @ 910-405-8311

jenn@cavinessandcates.com



3,150 Sq. Ft.

2 Stories

5 Bed

3.0 Bath

2 - 3 Garage

Master Bed: Up

About Halifax

- Great Room with fireplace.
- Kitchen with breakfast area and spacious butler's pantry.
- Covered porch or patio.
- Formal dining room with optional coffered ceiling and wainscoting detail.
- Guest room with access to hall bath with tub/shower combination.
- Second floor features Master Suite with optional tray ceiling, spacious walk-in closet, garden tub and separate shower, his and hers sinks, private water closet and linen closet.

...Read More Online



Elevation C



Elevation K



Elevation TW

Prices, plans, dimensions, features, specifications, materials, and availability of homes or communities are subject to change without notice or obligation. Illustrations are artists depictions only and may differ from completed improvements. All prices subject to change without notice. Please contact your sales associate before writing an offer.



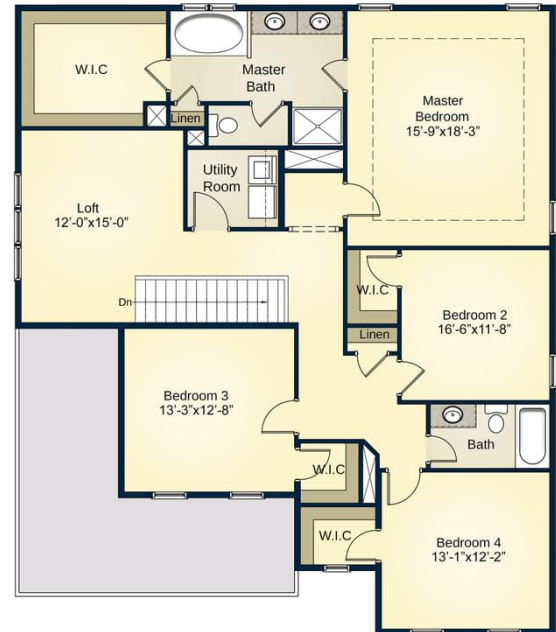
The Halifax
 CC3150

FIRST FLOOR



Gourmet kitchen option

SECOND FLOOR



Prices, plans, dimensions, features, specifications, materials, and availability of homes or communities are subject to change without notice or obligation. Illustrations are artists depictions only and may differ from completed improvements. All prices subject to change without notice. Please contact your sales associate before writing an offer.