



Priced

\$372,163

Elevation B

2,927 Sq Ft

2.0 Story

4 Beds

3.5 Baths

2 Car Garage

Master Bedroom: Down

About 162 Turner Run Drive

- First-floor master suite with beautiful tray ceiling, walk-in closet, his and hers sinks with granite vanity, garden soaking tub, and separate tile shower, tile flooring, linen closet, and private water closet
- Great room with gas log fireplace and built-in shelving with sliding glass door access to covered porch and grill patio
- Gourmet kitchen features granite countertops, subway tile backsplash, white cabinets, stainless steel microwave, dishwasher, double wall ovens, and gas cooktop range, island with sink

...Read More Online

About The Community.

Turner Run is Greenville's newest premier neighborhood. Turner Run borders the Tar River and provides a private, secluded feel. Families living in Turner Run will be part of the Wintergreen Elementary, Hope Middle School and D.H. Conley High School districts. Located off of Blackjack Simpson Road, Turner Run is a short drive to ECU campus and all the local shopping and restaurants in the Uptown District.

...Read More Online

Prices, plans, dimensions, features, specifications, materials, and availability of homes or communities are subject to change without notice or obligation. Illustrations are artists depictions only and may differ from completed improvements. All prices subject to change without notice. Please contact your sales associate before writing an offer.

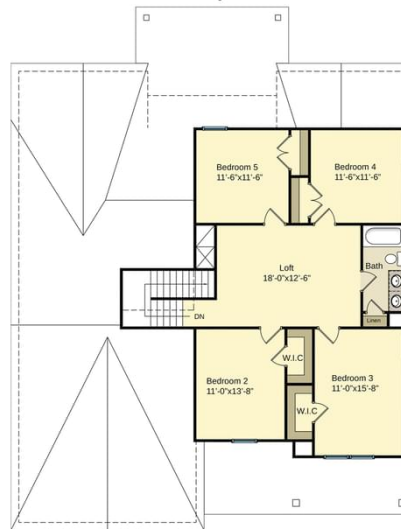
The Page CC2927

FIRST FLOOR

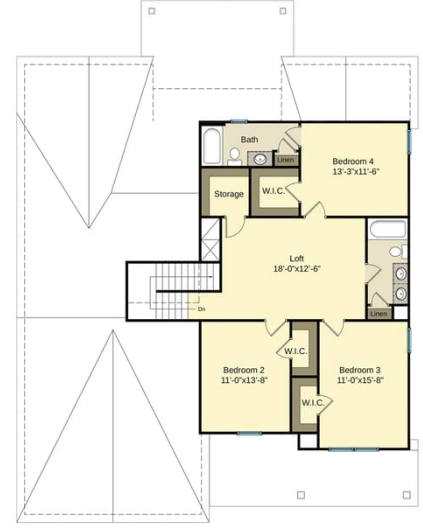


SECOND FLOOR

5BR Option



4BR Option



Prices, plans, dimensions, features, specifications, materials, and availability of homes or communities are subject to change without notice or obligation. Illustrations are artists depictions only and may differ from completed improvements. All prices subject to change without notice. Please contact your sales associate before writing an offer.