



## Priced

**\$338,442**

Elevation K

2,355 Sq Ft

2.0 Story

3 Beds

2.5 Baths

3 Car Garage

Primary Bedroom: Up

## About 190 Turner Run Drive

- The entrance of this 2 story home showcases a 2 story ceiling with hanging decorative light fixture; Two piece crown molding throughout main living space
- Eat-in kitchen with large island features granite countertops, subway tile backsplash, white cabinets, stainless steel microwave, dishwasher, and gas cooktop range, satin nickel finishes, pantry, and window over sink with views to the backyard
- Access to covered porch from breakfast area
- Great room with gas log fireplace

...Read More Online

## About The Community.

**SOLD OUT** - [See our other communities in the Greenville Area.](#)

Turner Run is Greenville's newest premier neighborhood. Turner Run borders the Tar River and provides a private, secluded feel. Families living in Turner Run will be part of the Wintergreen Elementary, Hope Middle School, and D.H. Conley High School districts. Located off of Blackjack Simpson Road, Turner Run is a short drive to ECU campus and all the local shopping and restaurants in the Uptown District.

...Read More Online

Prices, plans, dimensions, features, specifications, materials, and availability of homes or communities are subject to change without notice or obligation. Illustrations are artists depictions only and may differ from completed improvements. All prices subject to change without notice. Please contact your sales associate before writing an offer.

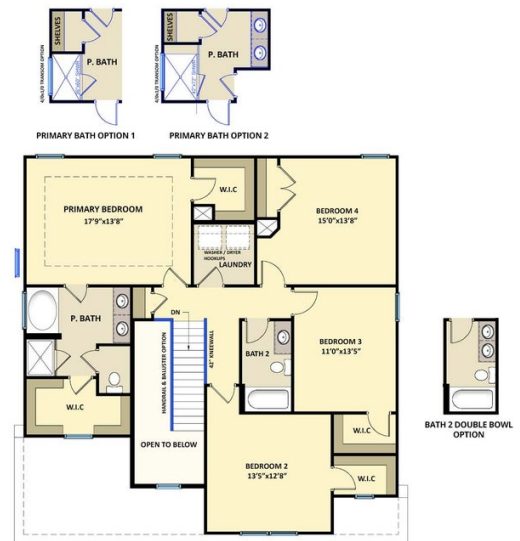
ARCHIVED 8/18/2023

**The Brunswick**  
CC2355

**FIRST FLOOR**



**SECOND FLOOR**



Prices, plans, dimensions, features, specifications, materials, and availability of homes or communities are subject to change without notice or obligation. Illustrations are artists depictions only and may differ from completed improvements. All prices subject to change without notice. Please contact your sales associate before writing an offer.

