

**Priced****\$343,160**

Elevation TW - ARCHIVED 2/16/22

2,927 Sq Ft

2.0 Story

4 Beds

3.5 Baths

2 Car Garage

Primary Bedroom: Down

About 257 Brown Farm Drive

- First-floor master suite with beautiful tray ceiling, spacious walk-in closet, his and hers sinks, linen closet, and private water closet
- Great room with gas log fireplace
- Kitchen features satin nickel finish, island with sink overlooking the great room, and pantry
- Mudroom/laundry room with built-in coat station
- Half bath with pedestal sink
- Study on first floor

...Read More Online

About The Community.**SOLD OUT** - [See our other communities in the Greenville Area.](#)

Turner Run is Greenville's newest premier neighborhood. Turner Run borders the Tar River and provides a private, secluded feel. Families living in Turner Run will be part of the Wintergreen Elementary, Hope Middle School, and D.H. Conley High School districts. Located off of Blackjack Simpson Road, Turner Run is a short drive to ECU campus and all the local shopping and restaurants in the Uptown District.

...Read More Online

Prices, plans, dimensions, features, specifications, materials, and availability of homes or communities are subject to change without notice or obligation. Illustrations are artists depictions only and may differ from completed improvements. All prices subject to change without notice. Please contact your sales associate before writing an offer.



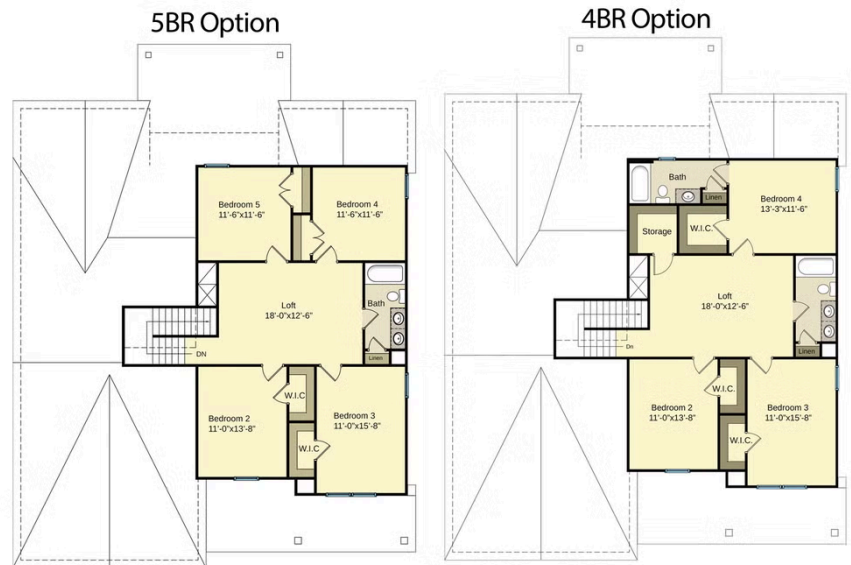
ARCHIVED

The Page CC2927

FIRST FLOOR



SECOND FLOOR



Prices, plans, dimensions, features, specifications, materials, and availability of homes or communities are subject to change without notice or obligation. Illustrations are artists depictions only and may differ from completed improvements. All prices subject to change without notice. Please contact your sales associate before writing an offer.