



257 Brown Farm Drive  
Greenville, NC 27858

**TURNER RUN - PAGE**

CONTACT OUR NEW HOME SPECIALISTS

**MAGGIE & JENN**

Call Us @ 910-405-8311

maggie@cavinessandcates.com



**Priced**

**\$343,160**

Elevation TW

2,927 Sq Ft

2.0 Story

4 Beds

2.5 Baths

2 Car Garage

Master Bedroom: Down

## About 257 Brown Farm Drive

- First-floor master suite with beautiful tray ceiling, spacious walk-in closet, his and hers sinks, linen closet, and private water closet
- Great room with gas log fireplace
- Kitchen features satin nickel finish, island with sink overlooking the great room, and pantry
- Mudroom/laundry room with built-in coat station
- Half bath with pedestal sink
- Study on first floor

...Read More Online

## About The Community.

Turner Run is Greenville's newest premier neighborhood. Turner Run borders the Tar River and provides a private, secluded feel. Families living in Turner Run will be part of the Wintergreen Elementary, Hope Middle School and D.H. Conley High School districts. Located off of Blackjack Simpson Road, Turner Run is a short drive to ECU campus and all the local shopping and restaurants in the Uptown District.

...Read More Online

Prices, plans, dimensions, features, specifications, materials, and availability of homes or communities are subject to change without notice or obligation. Illustrations are artists depictions only and may differ from completed improvements. All prices subject to change without notice. Please contact your sales associate before writing an offer.



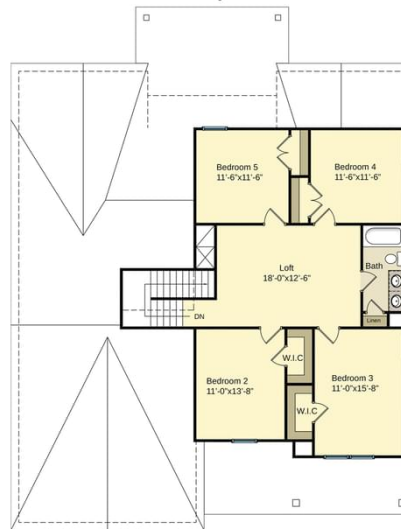
## The Page CC2927

### FIRST FLOOR

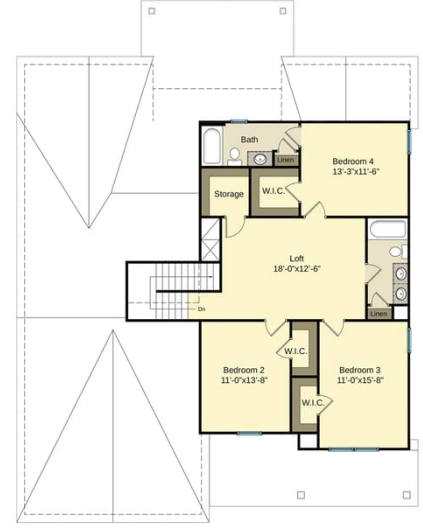


### SECOND FLOOR

#### 5BR Option



#### 4BR Option



Prices, plans, dimensions, features, specifications, materials, and availability of homes or communities are subject to change without notice or obligation. Illustrations are artists depictions only and may differ from completed improvements. All prices subject to change without notice. Please contact your sales associate before writing an offer.