



1011 Appaloosa Trail
Grimesland, NC 27837

BEDDARD RANCH - CAMBRIDGE

CONTACT OUR NEW HOME SPECIALISTS

MAGGIE & JESSICA

Call Us @ 910-405-8311

info@cavinessandcates.com



2,432 Sq Ft

1.5 Story

4 Beds

3.0 Baths

2 Car Garage

Primary Bedroom: Down

About 1011 Appaloosa Trail

- Great room with gas log fireplace with decorative mantle and granite surround in "Absolute Back".
- Open kitchen with island with sink overlooking the great room, quartz countertops in "Sparkling White", shaker cabinets painted in "Outerspace", and pantry; Stainless steel microwave, dishwasher, and gas range.
- Dining room with views to the backyard and access to rear covered porch.
- Primary suite on first floor with tray ceiling and crown molding and walk-in closet; Primary bath with dual sinks and quartz countertop in "Niagara", shaker cabinets in "Dovetail", garden tub and

...Read More Online

About The Community.

Welcome to Beddard Ranch—a charming 41-home community in Grimesland, NC, where spacious living meets small-town charm! With homesites averaging half an acre or more, you'll have plenty of room to spread out while still being just 15 minutes from the shopping, dining, and entertainment of Uptown Greenville.

Enjoy the quality craftsmanship and peace of mind that comes with the Caviness & Cates 1-2-10 year in-house warranty. Don't miss out; limited opportunities available. Check out our available homes and



...Read More Online

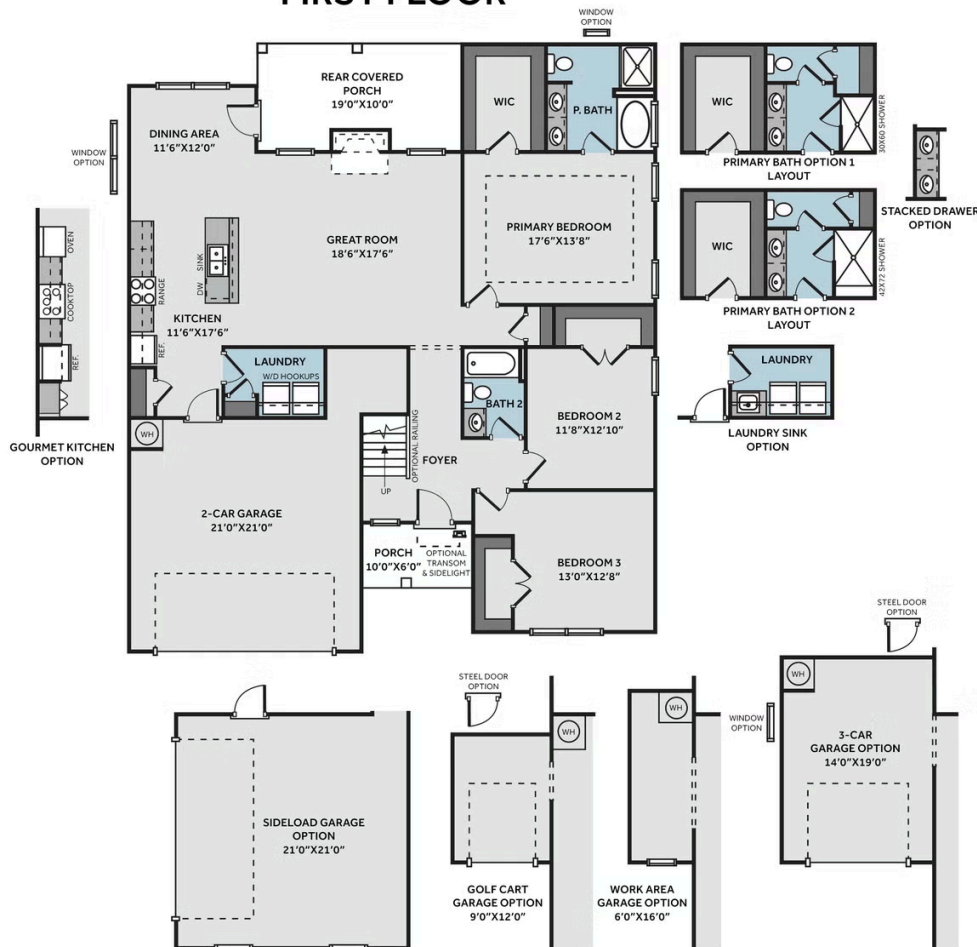
Prices, plans, dimensions, features, specifications, materials, and availability of homes or communities are subject to change without notice or obligation. Illustrations are artists depictions only and may differ from completed improvements. All prices subject to change without notice. Please contact your sales associate before writing an offer.



THE CAMBRIDGE

CC1850

FIRST FLOOR



SECOND FLOOR

