



1011 Appaloosa Trail
Grimesland, NC 27837
BEDDARD RANCH - CAMBRIDGE

CONTACT OUR NEW HOME SPECIALISTS
MAGGIE & JESSICA
Call Us @ 910-405-8311
info@cavinessandcates.com



Elevation F
2,432 Sq Ft
1.5 Story
4 Beds
3.0 Baths
2 Car Garage
Primary Bedroom: Down

About 1011 Appaloosa Trail

- Great room with gas log fireplace with decorative mantle and granite surround in "Absolute Back".
- Open kitchen with island with sink overlooking the great room, quartz countertops in "Sparkling White", shaker cabinets painted in "Outerspace", and pantry; Stainless steel microwave, dishwasher, and gas range.
- Dining room with views to the backyard and access to rear covered porch.
- Primary suite on first floor with tray ceiling and crown molding and walk-in closet; Primary bath with dual sinks and quartz countertop in "Niagara", shaker cabinets in "Dovetail", garden tub and

...Read More Online

About The Community.

Beddard Ranch is a cozy, 41-home community in Grimesland, NC. Enjoy spacious homesites averaging half an acre and more! Your new home in Beddard Ranch feels tucked away but is just 15 minutes from the shopping, dining, and entertainment of Uptown Greenville. All homes feature the Caviness & Cates in-house 1-2-10 year warranty. Choose from one of our pre-designed homes under construction, or start from the ground up by choosing your favorite homesite, plan, and design options from the beginning! See each home listing for builder incentives and contact our New Home Specialists for details!

...Read More Online

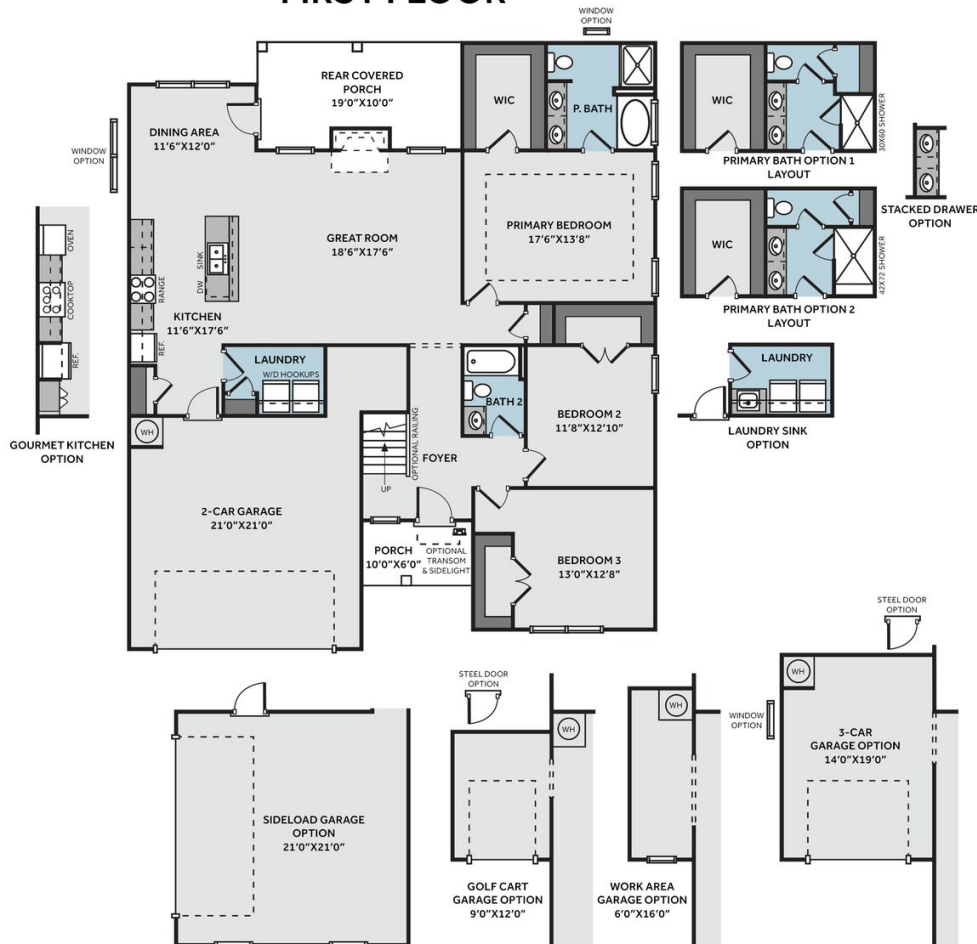
Prices, plans, dimensions, features, specifications, materials, and availability of homes or communities are subject to change without notice or obligation. Illustrations are artists depictions only and may differ from completed improvements. All prices subject to change without notice. Please contact your sales associate before writing an offer.



THE CAMBRIDGE

CC1850

FIRST FLOOR



SECOND FLOOR

