



1016 Appaloosa Trail  
Grimesland, NC 27837

**BEDDARD RANCH - FONTANA**

CONTACT OUR NEW HOME SPECIALISTS

**MAGGIE & JESSICA**

Call Us @ 910-405-8311

info@cavinessandcates.com



**Priced**

**\$441,900**

2,308 Sq Ft

2.0 Story

4 Beds

2.5 Baths

2 Car Garage

Primary Bedroom: Down

## About 1016 Appaloosa Trail

- This home features a kitchen with an island, quartz countertops in "Arctic White," white shaker cabinets, a natural stone herringbone mosaic tile, and a pantry cabinet. Stainless steel appliances include a microwave, dishwasher, and gas range.
- The spacious great room showcases a natural gas fireplace with a decorative mantle and "Absolute Black" granite surround, with sliding doors leading to the rear-covered porch, perfect for outdoor dining or relaxation.
- The first-floor primary suite offers a tray ceiling with crown molding, while the primary bathroom

...Read More Online

## About The Community.

Welcome to Beddard Ranch—a charming 41-home community in Grimesland, NC, where spacious living meets small-town charm! With homesites averaging half an acre or more, you'll have plenty of room to spread out while still being just 15 minutes from the shopping, dining, and entertainment of Uptown Greenville.

Enjoy the quality craftsmanship and peace of mind that comes with the Caviness & Cates 1-2-10 year in-house warranty. Don't miss out; limited opportunities available. Check out our available homes and

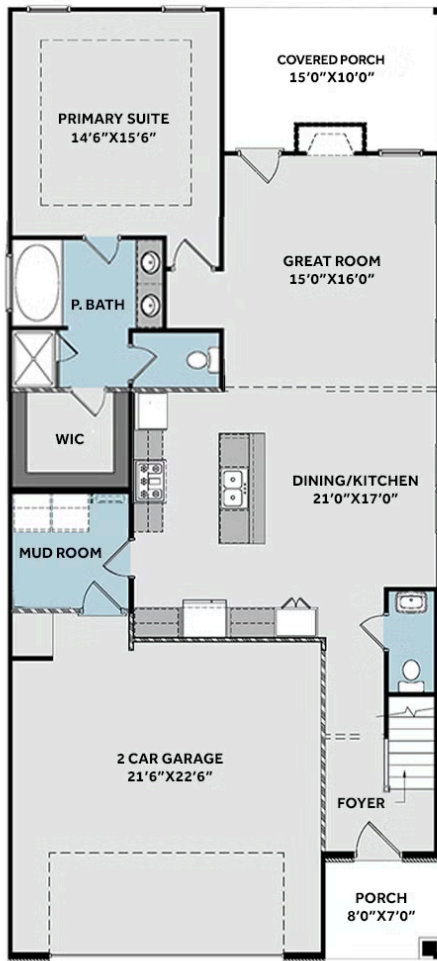


...Read More Online

Prices, plans, dimensions, features, specifications, materials, and availability of homes or communities are subject to change without notice or obligation. Illustrations are artists depictions only and may differ from completed improvements. All prices subject to change without notice. Please contact your sales associate before writing an offer.



## FIRST FLOOR



## SECOND FLOOR

