



1032 Appaloosa Trail
Grimesland, NC 27837

BEDDARD RANCH - GRANVILLE

CONTACT OUR NEW HOME SPECIALISTS

MAGGIE & JESSICA

Call Us @ 910-405-8311

info@cavinessandcates.com



Elevation F

2,876 Sq Ft

2.0 Story

4 Beds

2.5 Baths

2 Car Garage

Primary Bedroom: Down

About 1032 Appaloosa Trail

- Great Room with gas log fireplace.
- Kitchen with breakfast area, sink overlooking great room, quartz countertops in "Carrara Retro", upper shaker cabinets in "White" and lower shaker cabinets in "Wheat", single basin stainless steel undermount sink, and panty; Stainless steel microwave, dishwasher, and gas range.
- Carolina Room off breakfast area with access to covered rear porch.
- Formal dining room.
- Half bath pedestal sink and oval mirror.

...Read More Online

About The Community.

Welcome to Beddard Ranch—a charming 41-home community in Grimesland, NC, where spacious living meets small-town charm! With homesites averaging half an acre or more, you'll have plenty of room to spread out while still being just 15 minutes from the shopping, dining, and entertainment of Uptown Greenville.

Enjoy the quality craftsmanship and peace of mind that comes with the Caviness & Cates 1-2-10 year in-house warranty. Don't miss out; limited opportunities available. Check out our available homes and



...Read More Online

Prices, plans, dimensions, features, specifications, materials, and availability of homes or communities are subject to change without notice or obligation. Illustrations are artists depictions only and may differ from completed improvements. All prices subject to change without notice. Please contact your sales associate before writing an offer.

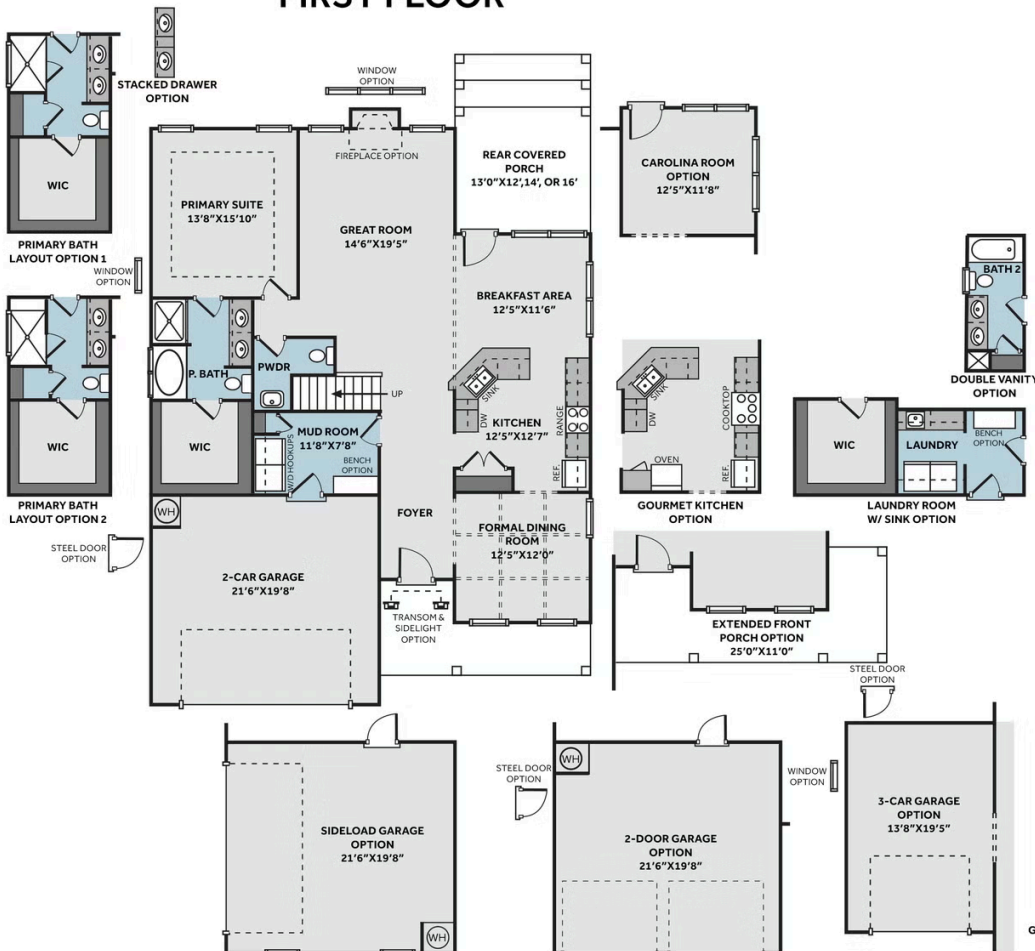


ARCHIVED 2/21/2025

THE GRANVILLE

CC2680

FIRST FLOOR



SECOND FLOOR

