



1051 Appaloosa Trail
Grimesland, NC 27837

BEDDARD RANCH - FONTANA

CONTACT OUR NEW HOME SPECIALISTS

MAGGIE & JESSICA

Call Us @ 910-405-8311

info@cavinessandcates.com



Priced

\$444,900

2,308 Sq Ft

2.0 Story

3 Beds

2.5 Baths

3 Car Garage

Primary Bedroom: Down

About 1051 Appaloosa Trail

- Kitchen with island, quartz countertops in "Arctic White", white shaker cabinets, subway tile backsplash in "Desert Gray" set in a herringbone pattern, and pantry cabinet; Stainless steel microwave, dishwasher, and gas range.
- Great room with gas log fireplace with decorative mantle and granite surround in "Absolute Black"; access to rear covered porch through Great Room.
- First-floor primary suite with tray ceiling and crown molding; Primary bathroom with access to walk-in closet, dual sink vanity with center drawer stack, quartz countertop in "Niagara", white shaker

...Read More Online

About The Community.

[SOLD OUT | VIEW OTHER COMMUNITIES IN THE AREA HERE](#)

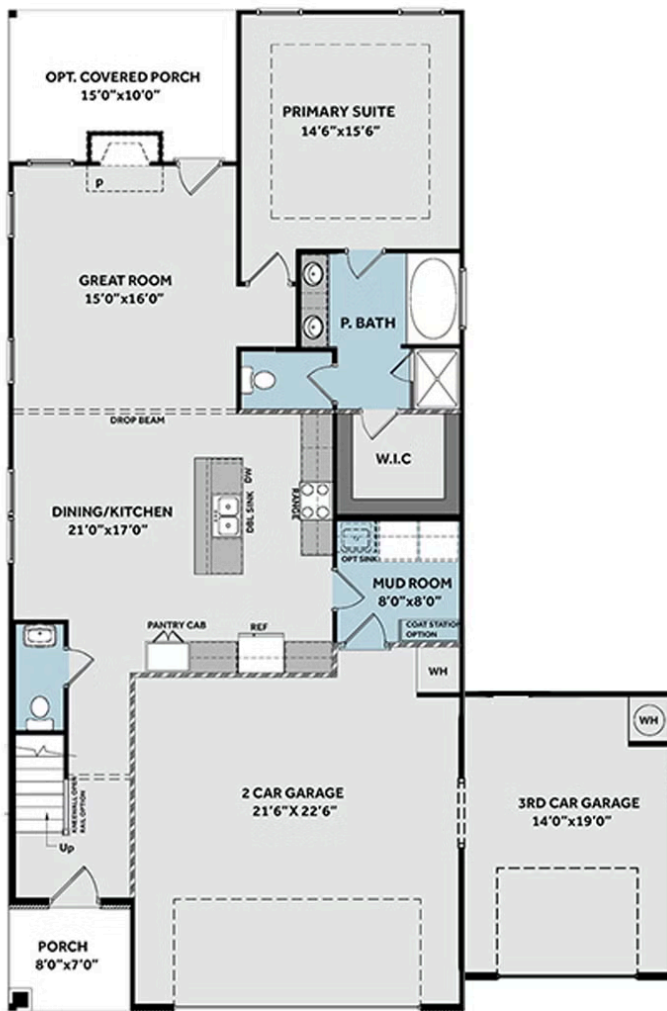
Welcome to Beddard Ranch—a charming 41-home community in Grimesland, NC, where spacious living meets small-town charm! With homesites averaging half an acre or more, you'll have plenty of room to spread out while still being just 15 minutes from the shopping, dining, and entertainment of Uptown Greenville.

...Read More Online

Prices, plans, dimensions, features, specifications, materials, and availability of homes or communities are subject to change without notice or obligation. Illustrations are artists depictions only and may differ from completed improvements. All prices subject to change without notice. Please contact your sales associate before writing an offer.



FIRST FLOOR



SECOND FLOOR

