



1051 Appaloosa Trail
Grimesland, NC 27837
BEDDARD RANCH - FONTANA

CONTACT OUR NEW HOME SPECIALISTS
MAGGIE & JESSICA
Call Us @ 910-405-8311
info@cavinessandcates.com



Priced

\$444,900

Elevation B
2,308 Sq Ft
2.0 Story
3 Beds
2.5 Baths
3 Car Garage
Primary Bedroom: Down

About 1051 Appaloosa Trail

- Kitchen with island, quartz countertops in "Arctic White", white shaker cabinets, subway tile backsplash in "Desert Gray" set in a herringbone pattern, and pantry cabinet; Stainless steel microwave, dishwasher, and gas range.
- Great room with gas log fireplace with decorative mantle and granite surround in "Absolute Black"; access to rear covered porch through Great Room.
- First-floor primary suite with tray ceiling and crown molding; Primary bathroom with access to walk-in closet, dual sink vanity with center drawer stack, quartz countertop in "Niagara", white shaker

...Read More Online

About The Community.

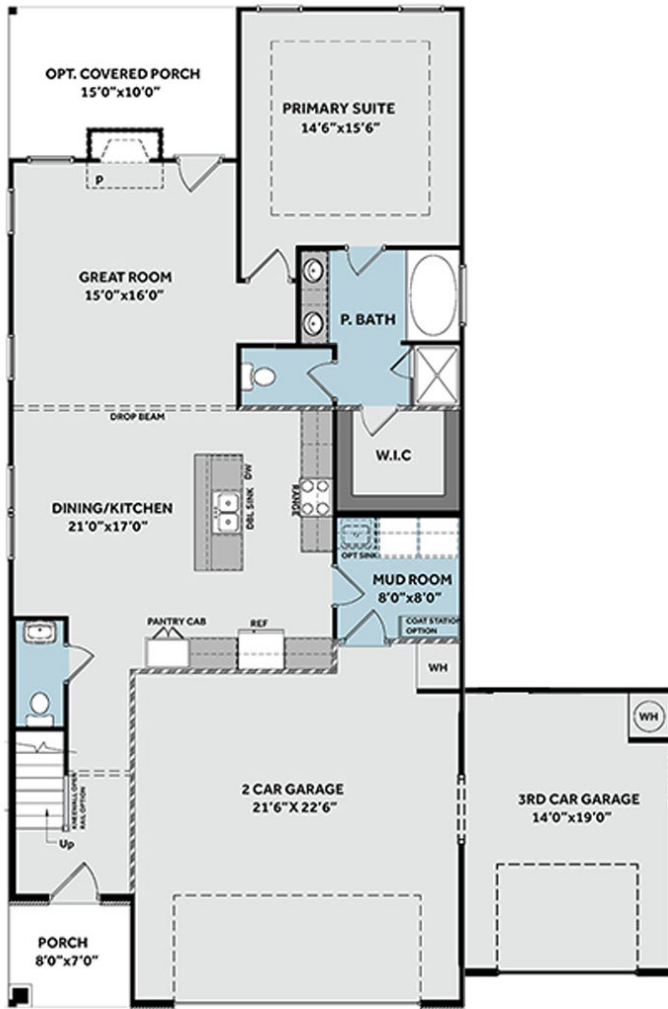
Beddard Ranch is a cozy, 41-home community in Grimesland, NC. Enjoy spacious homesites averaging half an acre and more! Your new home in Beddard Ranch feels tucked away but is just 15 minutes from the shopping, dining, and entertainment of Uptown Greenville. All homes feature the Caviness & Cates in-house 1-2-10 year warranty. Choose from one of our pre-designed homes under construction, or start from the ground up by choosing your favorite homesite, plan, and design options from the beginning! See each home listing for builder incentives and contact our New Home Specialists for details!

...Read More Online

Prices, plans, dimensions, features, specifications, materials, and availability of homes or communities are subject to change without notice or obligation. Illustrations are artists depictions only and may differ from completed improvements. All prices subject to change without notice. Please contact your sales associate before writing an offer.



FIRST FLOOR



SECOND FLOOR

