



1057 Appaloosa Trail  
Grimesland, NC 27837

**BEDDARD RANCH - CAMELLIA**

CONTACT OUR NEW HOME SPECIALISTS

**MAGGIE & JESSICA**

Call Us @ 910-405-8311

info@cavinessandcates.com



**Priced**

**\$409,900**

2,358 Sq Ft

2.0 Story

3 Beds

2.5 Baths

3 Car Garage

Primary Bedroom: Down

## About 1057 Appaloosa Trail

- Upon entering the home, a formal dining room painted in Sherwin Williams "Homburg Gray" with a coffered ceiling and picture frame wainscoting detail, is located off the foyer with direct access to the kitchen.
- The entryway leads to a mudroom with built-in bench and cubbies, and access to both the garage and a half-bath featuring a pedestal sink and oval mirror.
- The kitchen offers ample countertop space with quartz countertops in "Elegance," a sink overlooking the great room, bar seating, white shaker cabinets, subway tile backsplash in "Arctic

...Read More Online

## About The Community.

Welcome to Beddard Ranch—a charming 41-home community in Grimesland, NC, where spacious living meets small-town charm! With homesites averaging half an acre or more, you'll have plenty of room to spread out while still being just 15 minutes from the shopping, dining, and entertainment of Uptown Greenville.

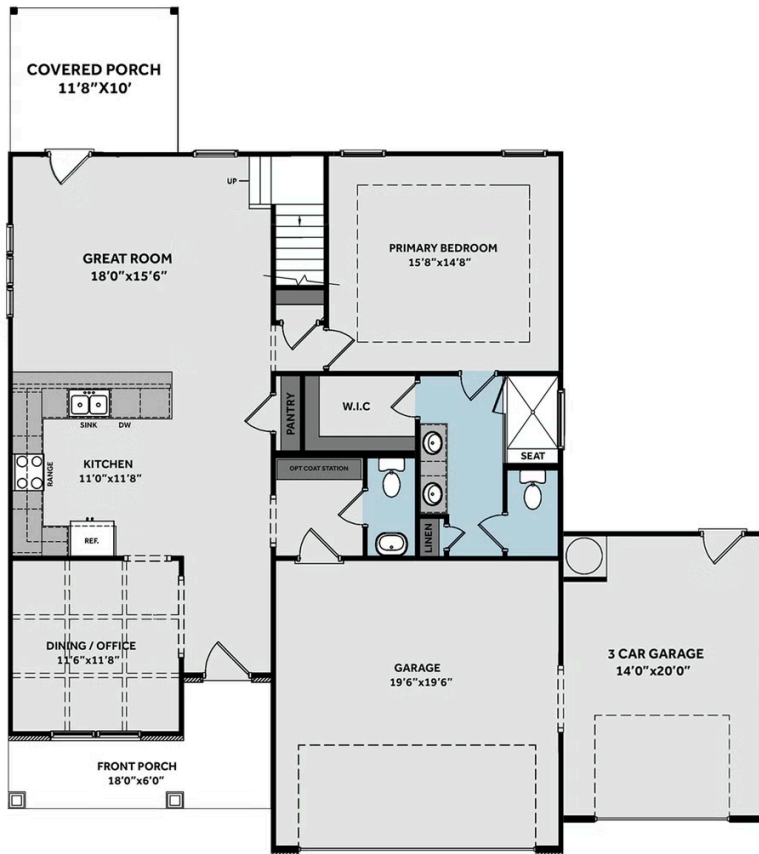
Enjoy the quality craftsmanship and peace of mind that comes with the Caviness & Cates 1-2-10 year in-house warranty. Don't miss out; limited opportunities available. Check out our available homes and builder incentives and connect with our New Home Specialists today!

...Read More Online

Prices, plans, dimensions, features, specifications, materials, and availability of homes or communities are subject to change without notice or obligation. Illustrations are artists depictions only and may differ from completed improvements. All prices subject to change without notice. Please contact your sales associate before writing an offer.



## FIRST FLOOR



## SECOND FLOOR

