



2810 Palamino Way  
Grimesland, NC 27837

**BEDDARD RANCH - CEDAR HILL**

CONTACT OUR NEW HOME SPECIALISTS

**MAGGIE & JESSICA**

Call Us @ 910-405-8311

info@cavinessandcates.com



**Priced**

**\$499,900**

2,921 Sq Ft

2.0 Story

4 Beds

3.0 Baths

2 Car Garage

Primary Bedroom: Up

## About 2810 Palamino Way

- This stunning home features an open great room with a gas log fireplace, complete with a floating mantle stained in "Grey Chestnut."
- The space offers seamless access to the rear covered deck, perfect for indoor-outdoor living.
- The spacious kitchen, designed for both function and style, boasts an island overlooking the great room, quartz countertops in "New Willow White," a subway tile backsplash in "Arctic White" set in a brick pattern, white shaker cabinets, a corner pantry, and a window over the sink offering backyard views. Stainless steel appliances, including a microwave, dishwasher, and gas range, complete the

...Read More Online

## About The Community.

Welcome to Beddard Ranch—a charming 41-home community in Grimesland, NC, where spacious living meets small-town charm! With homesites averaging half an acre or more, you'll have plenty of room to spread out while still being just 15 minutes from the shopping, dining, and entertainment of Uptown Greenville.

Enjoy the quality craftsmanship and peace of mind that comes with the Caviness & Cates 1-2-10 year in-house warranty. Don't miss out; limited opportunities available. Check out our available homes and

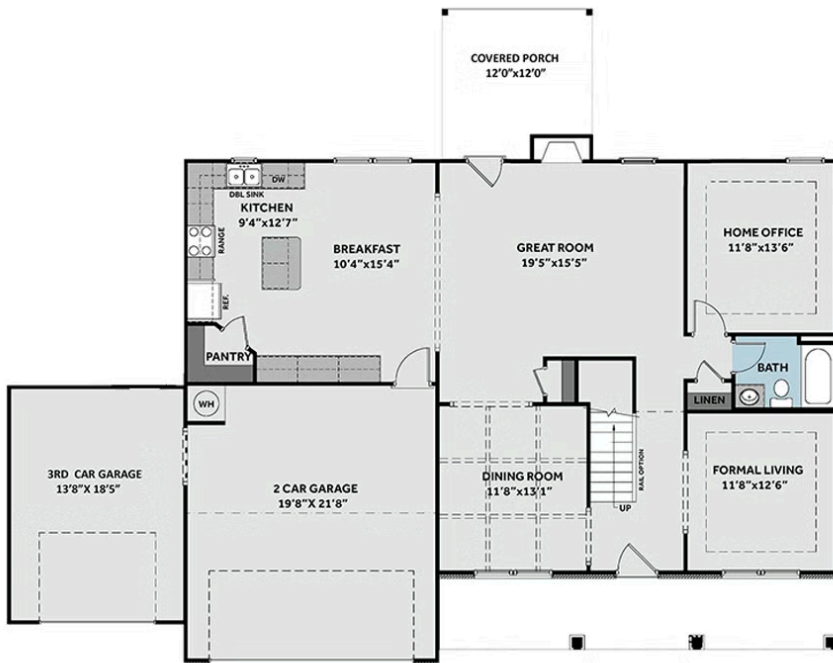


...Read More Online

Prices, plans, dimensions, features, specifications, materials, and availability of homes or communities are subject to change without notice or obligation. Illustrations are artists depictions only and may differ from completed improvements. All prices subject to change without notice. Please contact your sales associate before writing an offer.



## FIRST FLOOR



## SECOND FLOOR

