



2820 Palamino Way
Grimesland, NC 27837

BEDDARD RANCH - GRANVILLE

CONTACT OUR NEW HOME SPECIALISTS

MAGGIE & JESSICA

Call Us @ 910-405-8311

info@cavinessandcates.com



Elevation F

2,876 Sq Ft

2.0 Story

4 Beds

2.5 Baths

3 Car Garage

Primary Bedroom: Down

About 2820 Palamino Way

Great Room with gas log fireplace with decorative mantle and "Arctic Gray Marble" surround.

Kitchen with breakfast area, sink overlooking great room, quartz countertop in "Elegance", undermount sink, white shaker cabinets, and pantry; Stainless steel microwave, dishwasher, and gas range.

Carolina room off of breakfast area.

Formal Dining room.

Half bath pedestal sink and oval mirror.

Mudroom with washer/dryer connections and closet.

Luxury primary suite with tray ceiling, walk-in closet, dual sink vanity with center drawer stack, quartz

[...Read More Online](#)

About The Community.

[SOLD OUT | VIEW OTHER COMMUNITIES IN THE AREA HERE](#)

Welcome to Beddard Ranch—a charming 41-home community in Grimesland, NC, where spacious living meets small-town charm! With homesites averaging half an acre or more, you'll have plenty of room to spread out while still being just 15 minutes from the shopping, dining, and entertainment of Uptown Greenville.

[...Read More Online](#)

Prices, plans, dimensions, features, specifications, materials, and availability of homes or communities are subject to change without notice or obligation. Illustrations are artists depictions only and may differ from completed improvements. All prices subject to change without notice. Please contact your sales associate before writing an offer.

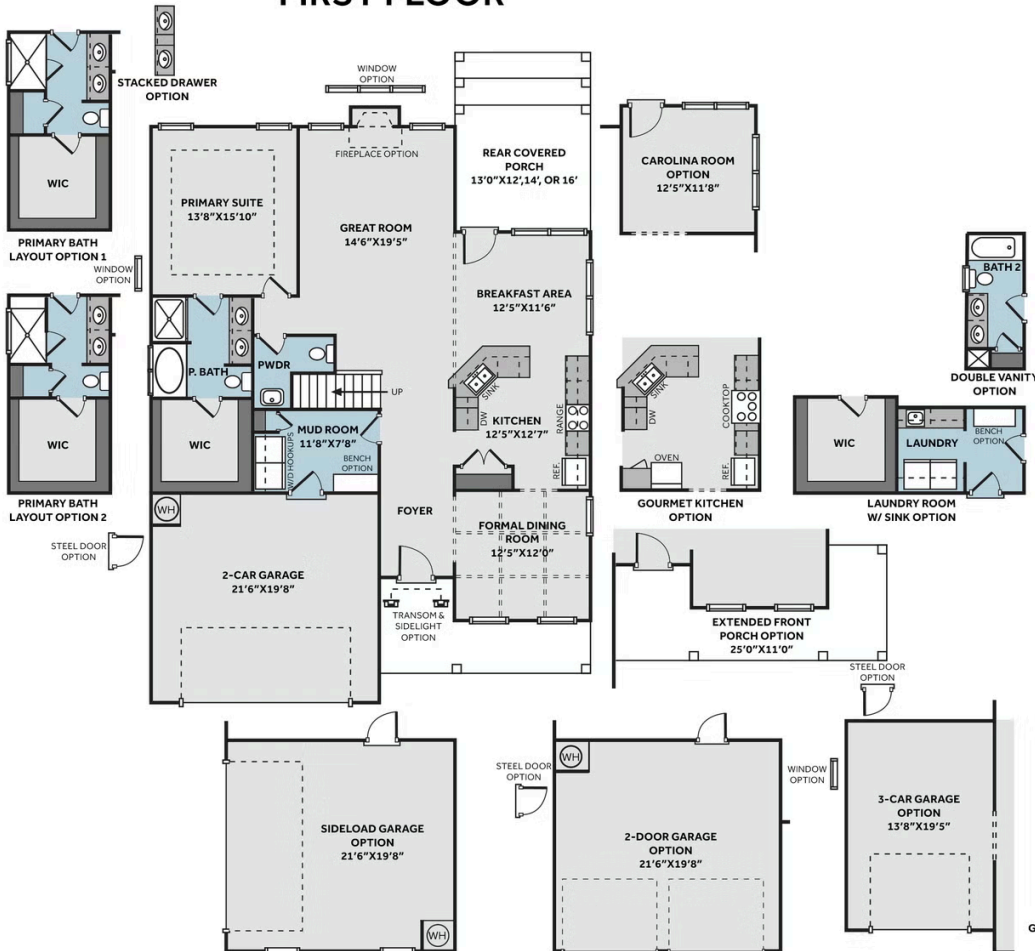


ARCHIVED 2/21/2025

THE GRANVILLE

CC2680

FIRST FLOOR



SECOND FLOOR

