



2828 Palamino Way
Grimesland, NC 27837

BEDDARD RANCH - CEDAR HILL

CONTACT OUR NEW HOME SPECIALISTS

MAGGIE & JESSICA

Call Us @ 910-405-8311

info@cavinessandcates.com



Priced

\$502,900

2,921 Sq Ft

2.0 Story

4 Beds

3.0 Baths

3 Car Garage

Primary Bedroom: Up

About 2828 Palamino Way

- Open great room with gas log fireplace with decorative mantle and granite surround in "Absolute Black"; Access to rear covered porch through great room.
- Spacious kitchen with island overlooking the great room, quartz countertops in "New Willow White", subway tile backsplash in "Arctic White" set in a brick pattern, white shaker cabinets, corner pantry, breakfast area, and window over sink with views to the backyard; Stainless steel microwave, dishwasher, and gas range.
- Formal living room with tray ceiling and crown molding.

[...Read More Online](#)

About The Community.

[SOLD OUT | VIEW OTHER COMMUNITIES IN THE AREA HERE](#)

Welcome to Beddard Ranch—a charming 41-home community in Grimesland, NC, where spacious living meets small-town charm! With homesites averaging half an acre or more, you'll have plenty of room to spread out while still being just 15 minutes from the shopping, dining, and entertainment of Uptown Greenville.

[...Read More Online](#)

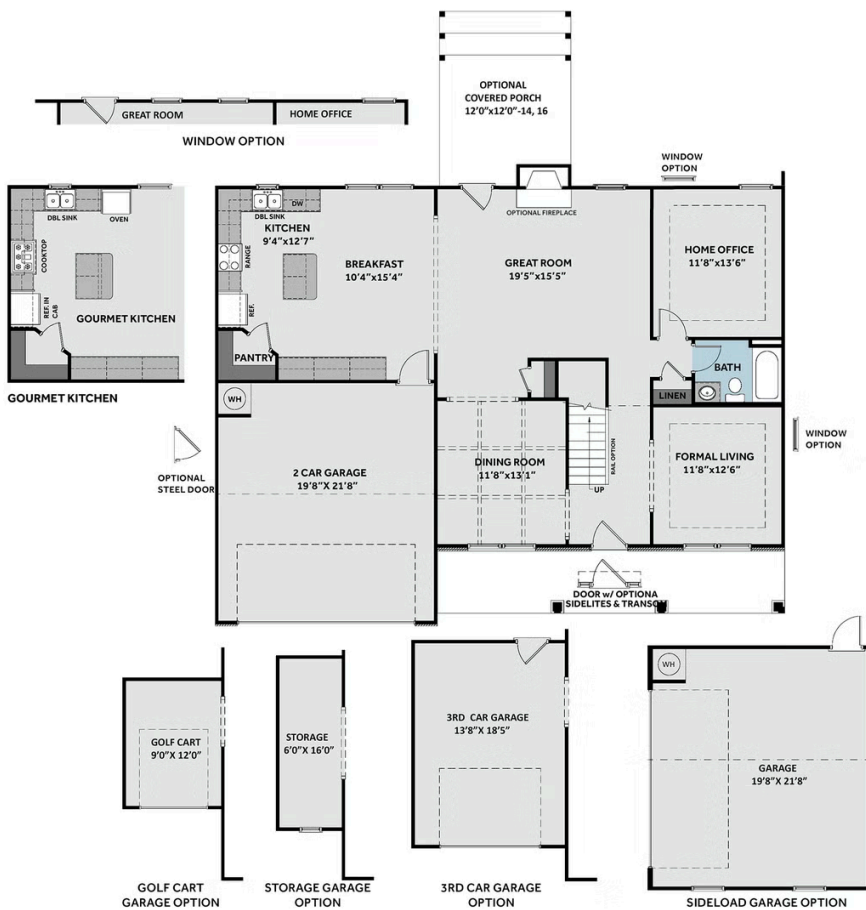
Prices, plans, dimensions, features, specifications, materials, and availability of homes or communities are subject to change without notice or obligation. Illustrations are artists depictions only and may differ from completed improvements. All prices subject to change without notice. Please contact your sales associate before writing an offer.



ARCHIVED 7/24/2024

THE CEDAR HILL CC2957

FIRST FLOOR



SECOND FLOOR

