



2829 Palamino Way
Grimesland, NC 27837

BEDDARD RANCH - CLAYTON

CONTACT OUR NEW HOME SPECIALISTS

MAGGIE & JESSICA

Call Us @ 910-405-8311

info@cavinessandcates.com



Priced

\$448,900

2,560 Sq Ft

2.0 Story

4 Beds

3.5 Baths

2 Car Garage

Primary Bedroom: Down

About 2829 Palamino Way

- 1.29-acre cul-de-sac lot!
- Primary suite on the first floor with tray ceiling and crown molding; Primary bath with dual sink vanity with center drawer stack and white shaker cabinets, quartz countertop in "Simply White", garden tub and separate shower with tile surround, private water closet, tile flooring, and walk-in closet.
- Great room with gas log fireplace with decorative mantle and granite surround in "Absolute Black"; Access to rear covered porch.

...Read More Online

About The Community.

[SOLD OUT | VIEW OTHER COMMUNITIES IN THE AREA HERE](#)

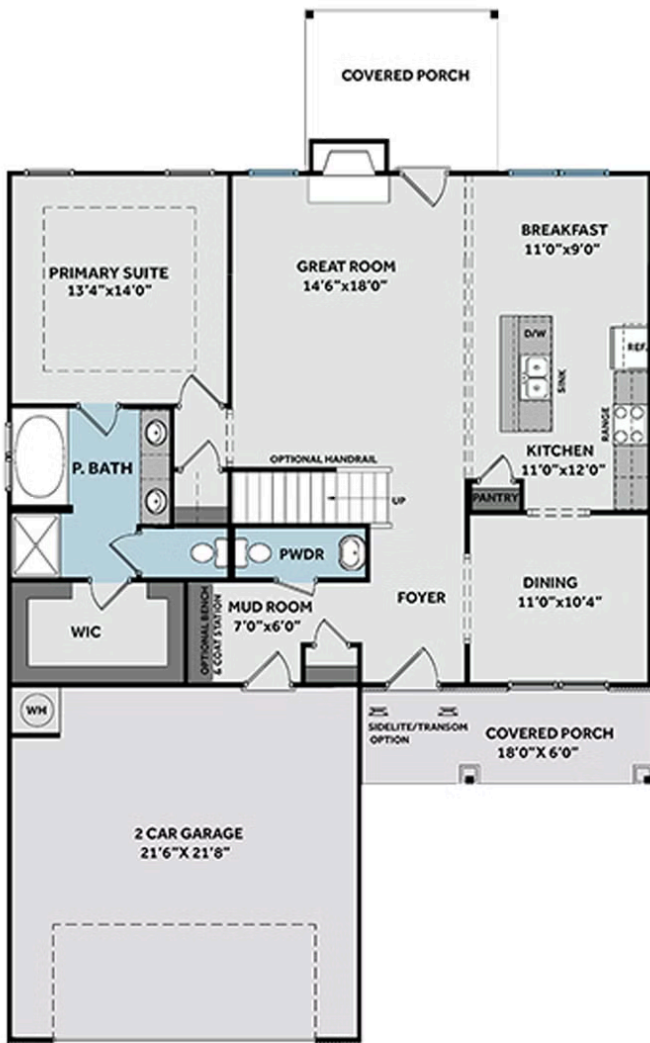
Welcome to Beddard Ranch—a charming 41-home community in Grimesland, NC, where spacious living meets small-town charm! With homesites averaging half an acre or more, you'll have plenty of room to spread out while still being just 15 minutes from the shopping, dining, and entertainment of Uptown Greenville.

...Read More Online

Prices, plans, dimensions, features, specifications, materials, and availability of homes or communities are subject to change without notice or obligation. Illustrations are artists depictions only and may differ from completed improvements. All prices subject to change without notice. Please contact your sales associate before writing an offer.



FIRST FLOOR



SECOND FLOOR

