



943 Appaloosa Trail  
Grimesland, NC 27837

**BEDDARD RANCH - CAMBRIDGE**

CONTACT OUR NEW HOME SPECIALISTS

**MAGGIE & JESSICA**

Call Us @ 910-405-8311

[info@cavinessandcates.com](mailto:info@cavinessandcates.com)



**Priced**

**\$428,900**

2,432 Sq Ft

1.5 Story

4 Beds

3.0 Baths

2 Car Garage

Primary Bedroom: Down

## About 943 Appaloosa Trail

- Great room with gas log fireplace with decorative mantle and granite surround in "Absolute Back".
- Open kitchen with island with sink overlooking the great room, granite countertops in "Azul Platino", subway tile backsplash in "Desert Gray" set in a brick pattern, white shaker cabinets, and pantry; Stainless steel microwave, dishwasher, and gas range.
- Dining room with views to the backyard and access to rear covered porch.
- Primary suite on first floor with tray ceiling and crown molding and walk-in closet; Primary bath with dual sinks and quartz countertop in "Niagara", shaker cabinets with center drawer stack painted in

[...Read More Online](#)

## About The Community.

**[SOLD OUT | VIEW OTHER COMMUNITIES IN THE AREA HERE](#)**

Welcome to Beddard Ranch—a charming 41-home community in Grimesland, NC, where spacious living meets small-town charm! With homesites averaging half an acre or more, you'll have plenty of room to spread out while still being just 15 minutes from the shopping, dining, and entertainment of Uptown Greenville.

[...Read More Online](#)

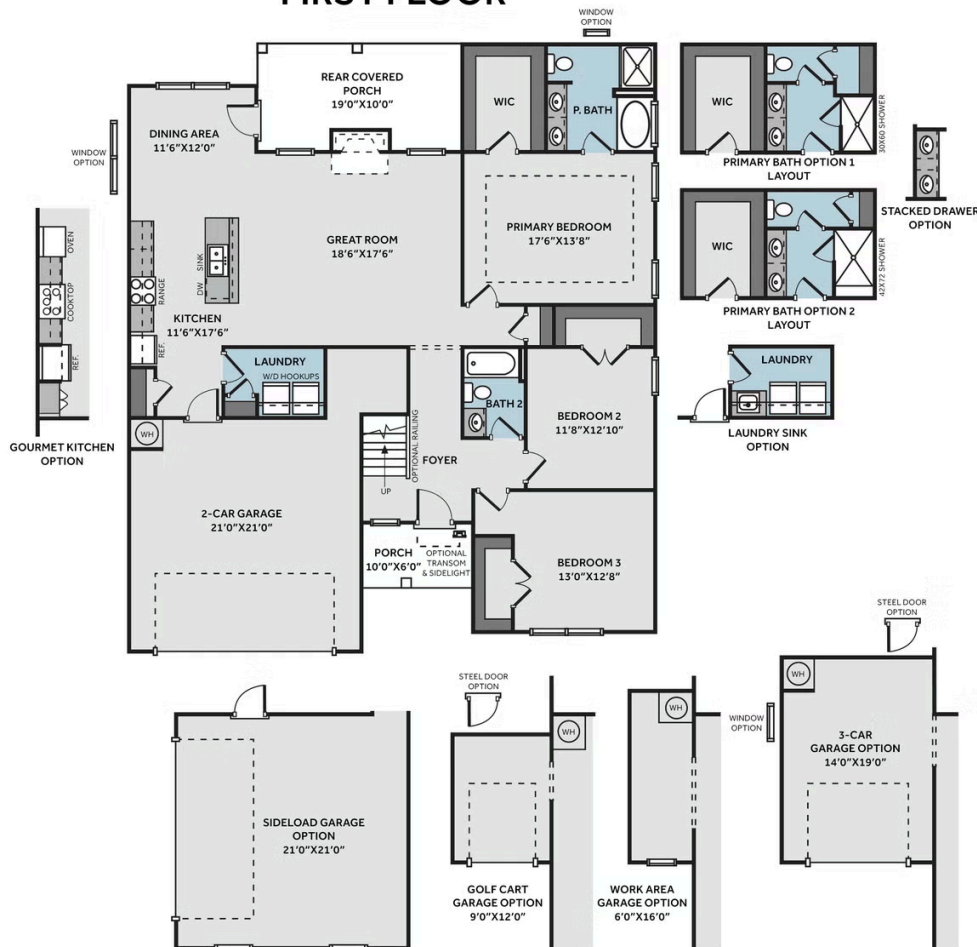
Prices, plans, dimensions, features, specifications, materials, and availability of homes or communities are subject to change without notice or obligation. Illustrations are artists depictions only and may differ from completed improvements. All prices subject to change without notice. Please contact your sales associate before writing an offer.



# THE CAMBRIDGE

CC1850

## FIRST FLOOR



## SECOND FLOOR

