



969 Appaloosa Trail  
Grimesland, NC 27837

**BEDDARD RANCH - GRANVILLE**

CONTACT OUR NEW HOME SPECIALISTS

**MAGGIE & JESSICA**

Call Us @ 910-405-8311

[info@cavinessandcates.com](mailto:info@cavinessandcates.com)



**Priced**  
**\$489,900**

Elevation K

2,876 Sq Ft

2.0 Story

4 Beds

2.5 Baths

3 Car Garage

Primary Bedroom: Down

## About 969 Appaloosa Trail

- Great room with gas log fireplace with decorative mantle and granite surround in "Absolute Black".
- Kitchen with sink overlooking the great room, granite countertops in "New Caledonia", subway tile backsplash in "Desert Gray" set in a herringbone pattern, white shaker cabinets, breakfast area, and pantry cabinet; Stainless steel microwave, dishwasher, and smooth gas range.
- Carolina Room off of breakfast area.
- Rear covered porch with grill patio is easily accessible through the Carolina Room.
- Elegant formal dining room painted in Sherwin Williams "Dorian Grey" with coffered ceiling and

...Read More Online

## About The Community.

**[SOLD OUT | VIEW OTHER COMMUNITIES IN THE AREA HERE](#)**

Welcome to Beddard Ranch—a charming 41-home community in Grimesland, NC, where spacious living meets small-town charm! With homesites averaging half an acre or more, you'll have plenty of room to spread out while still being just 15 minutes from the shopping, dining, and entertainment of Uptown Greenville.

...Read More Online

Prices, plans, dimensions, features, specifications, materials, and availability of homes or communities are subject to change without notice or obligation. Illustrations are artists depictions only and may differ from completed improvements. All prices subject to change without notice. Please contact your sales associate before writing an offer.

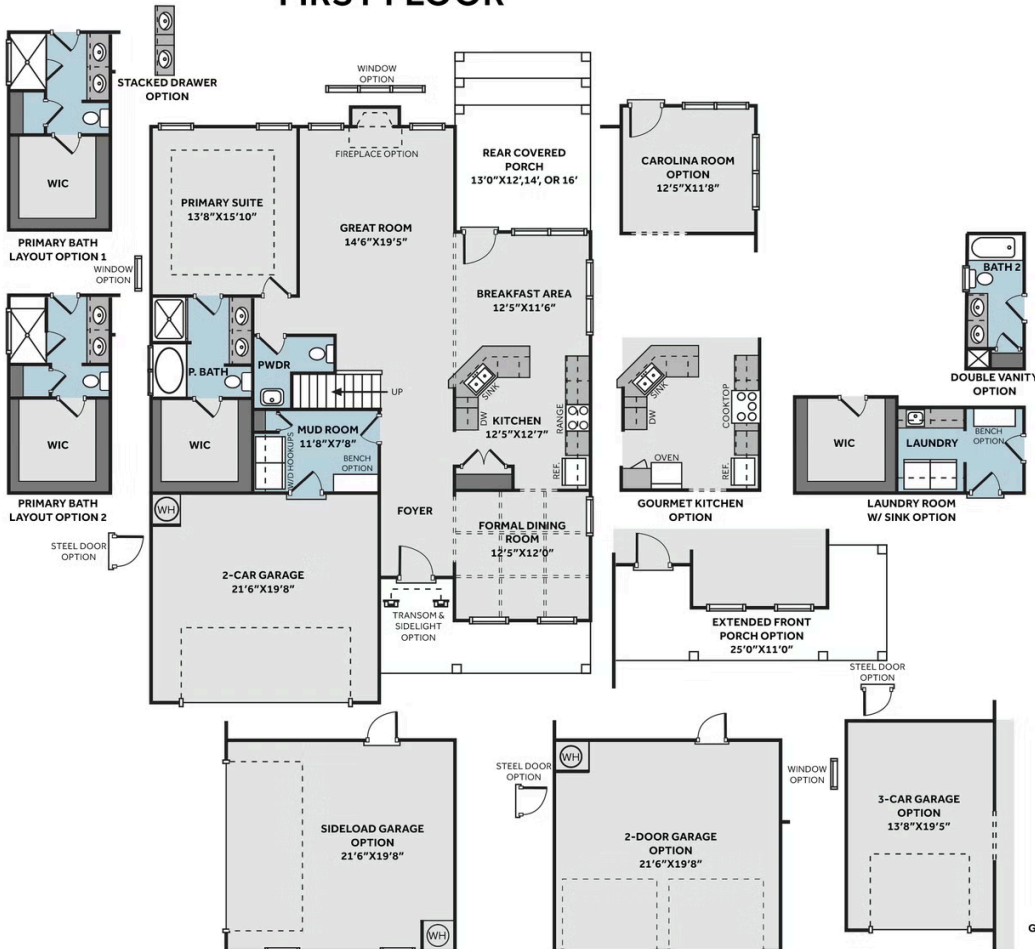


ARCHIVED 2/21/2025

## THE GRANVILLE

CC2680

### FIRST FLOOR



### SECOND FLOOR

