



2,560 Sq. Ft.

2 Stories

4 Bed

3.5 Bath

2 - 3 Garage

Master Bed: Down

About Clayton

- Primary suite on the first floor with optional tray ceiling, optional additional window; Primary bath with dual sinks, optional center drawer stack in vanity, private water closet, and walk-in closet, and garden tub and separate shower.
Great room with optional gas log fireplace and access to optional covered porch or grill patio.
- Formal Dining Room with coffered ceiling and wainscoting detail option
- Optional flex room with french door entry in lieu of formal dining room
- Kitchen open to great room with breakfast area, island with sink, and pantry; Gourmet appliance

...Read More Online

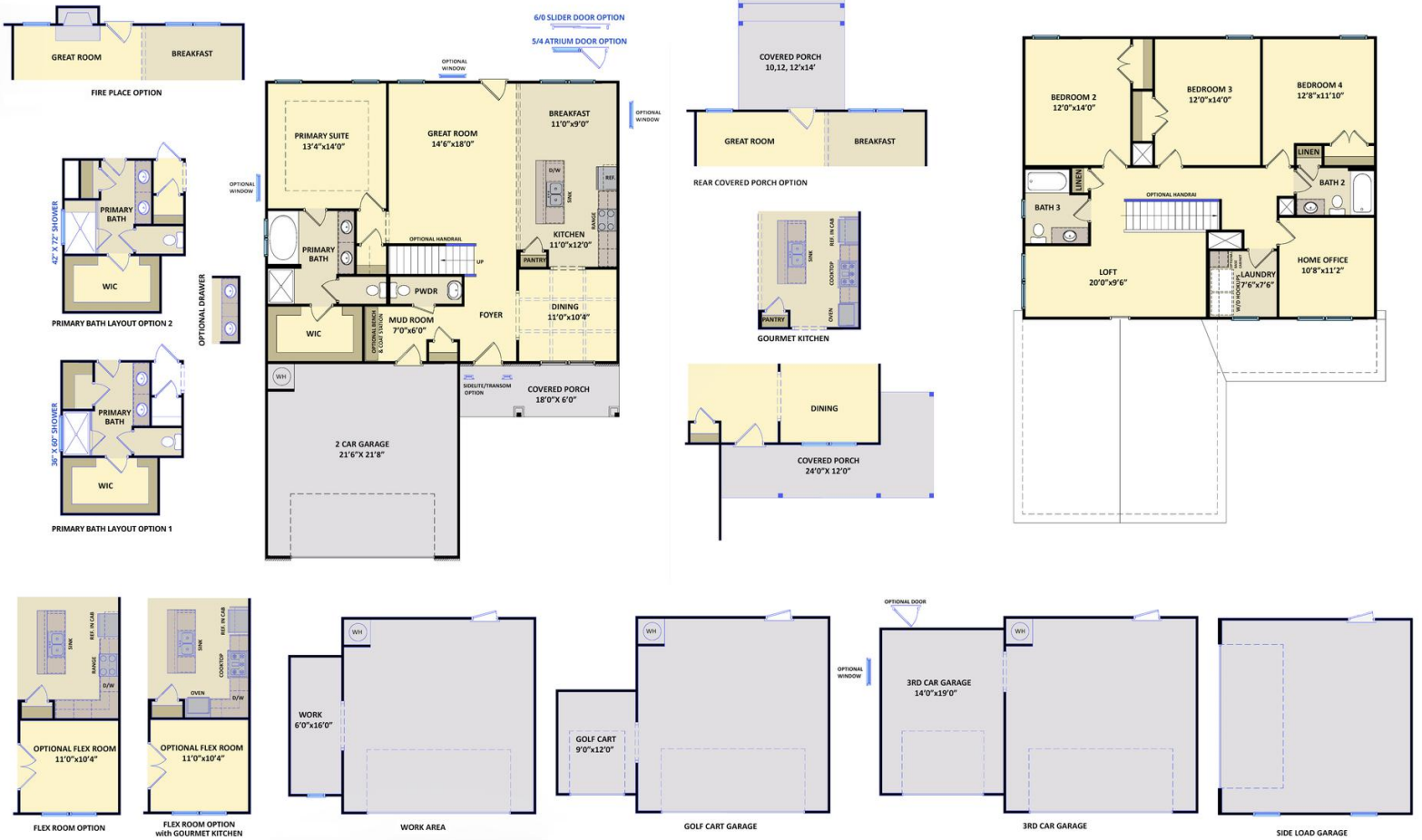


Elevation D

The Clayton
CC2560

FIRST FLOOR

SECOND FLOOR



Prices, plans, dimensions, features, specifications, materials, and availability of homes or communities are subject to change without notice or obligation. Illustrations are artists depictions only and may differ from completed improvements. All prices subject to change without notice. Please contact your sales associate before writing an offer.

