



Priced

\$306,900

ARCHIVED 7/06/2022 - Elevation F

2,355 Sq Ft

2.0 Story

4 Beds

2.5 Baths

3 Car Garage

Master Bedroom: Up

About 499 Flip Flop Lane

- The entrance of this 2 story home showcases a 2 story ceiling with hanging decorative light fixture
- Eat-in kitchen features granite countertops, tile backsplash, white cabinets, stainless steel microwave, dishwasher, and smooth top range, satin nickel finishes, large island overlooking the great room, pantry, and window over kitchen sink with views to the backyard!
- Covered porch and grill patio creates the perfect outdoor space
- Great room with gas log fireplace
- Formal dining room

...Read More Online

About The Community.

SOLD OUT - [See our other communities in the Greenville Area.](#)

Summer Place is Pitt County's newest development, located in Grimesland. This new neighborhood is located just minutes away from the newer Walmart on Highway 33 in addition to a Food Lion and some locally owned restaurants. From there, it is a short commute to ECU's main campus and the growing Uptown Greenville scene with more locally owned shops and eateries. Since Summer Place is in Grimesland, it is in the G.R. Whitfield elementary and middle schools, which feed into the popular D.H. Conley High School district.

...Read More Online

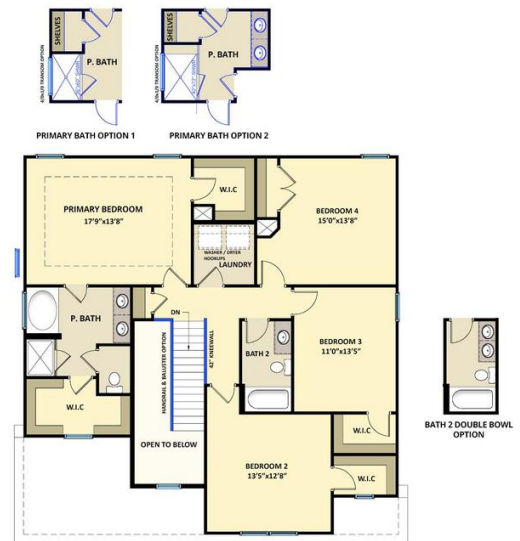
Prices, plans, dimensions, features, specifications, materials, and availability of homes or communities are subject to change without notice or obligation. Illustrations are artists depictions only and may differ from completed improvements. All prices subject to change without notice. Please contact your sales associate before writing an offer.

The Brunswick
CC2355

FIRST FLOOR



SECOND FLOOR



Prices, plans, dimensions, features, specifications, materials, and availability of homes or communities are subject to change without notice or obligation. Illustrations are artists depictions only and may differ from completed improvements. All prices subject to change without notice. Please contact your sales associate before writing an offer.

