



515 Flip Flop Lane
Grimesland, NC 27837

SUMMER PLACE - DRAYTON

CONTACT OUR NEW HOME SPECIALISTS

MAGGIE & JESSICA

Call Us @ 910-405-8311

info@cavinessandcates.com



Priced

\$295,000

Elevation F - ARCHIVED 3/29/23

2,325 Sq Ft

2.0 Story

4 Beds

2.5 Baths

2 Car Garage

Primary Bedroom: Up

About 515 Flip Flop Lane

- Kitchen features granite countertops, subway tile backsplash, white cabinets, stainless steel microwave, dishwasher, and smooth top range, satin nickel finishes, large island, corner pantry, and window over kitchen sink with views to the backyard
- Covered porch and grill patio create the perfect outdoor space
- Formal dining room with wainscoting detail and coffered ceiling
- Great room with gas log fireplace
- Staircase with metal balusters

...Read More Online

About The Community.

SOLD OUT - [See our other communities in the Greenville Area.](#)

Summer Place is Pitt County's newest development, located in Grimesland. This new neighborhood is located just minutes away from the newer Walmart on Highway 33 in addition to a Food Lion and some locally owned restaurants. From there, it is a short commute to ECU's main campus and the growing Uptown Greenville scene with more locally owned shops and eateries. Since Summer Place is in Grimesland, it is in the G.R. Whitfield elementary and middle schools, which feed into the popular D.H. Conley High School district.

...Read More Online

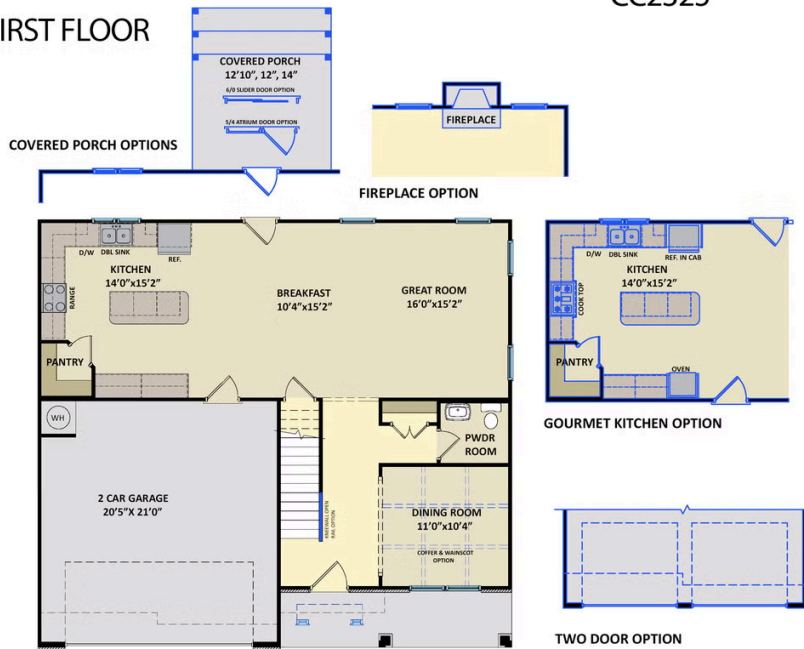
Prices, plans, dimensions, features, specifications, materials, and availability of homes or communities are subject to change without notice or obligation. Illustrations are artists depictions only and may differ from completed improvements. All prices subject to change without notice. Please contact your sales associate before writing an offer.



ARCHIVED 2021

The Drayton
CC2325

FIRST FLOOR



SECOND FLOOR

