



Priced

\$309,900

Elevation F - ARCHIVED 3/31/2022

2,432 Sq Ft

1.5 Story

4 Beds

3.0 Baths

2 Car Garage

Primary Bedroom: Down

About 520 Flip Flop Lane

- Spacious great room with gas log fireplace
- Kitchen features granite countertops, subway tile backsplash, white cabinets, stainless steel microwave, dishwasher, and smooth top range, satin nickel finishes, pantry, dining area, and island with sink overlooking the great room
- Master suite with beautiful tray ceiling & crown molding, walk-in closet, garden tub and separate shower with tile surround, tile flooring, and his & hers sinks with cultured marble vanity
- Covered porch and grill patio creates the perfect outdoor living space

...Read More Online

About The Community.

SOLD OUT - [See our other communities in the Greenville Area.](#)

Summer Place is Pitt County's newest development, located in Grimesland. This new neighborhood is located just minutes away from the newer Walmart on Highway 33 in addition to a Food Lion and some locally owned restaurants. From there, it is a short commute to ECU's main campus and the growing Uptown Greenville scene with more locally owned shops and eateries. Since Summer Place is in Grimesland, it is in the G.R. Whitfield elementary and middle schools, which feed into the popular D.H. Conley High School district.

...Read More Online

Prices, plans, dimensions, features, specifications, materials, and availability of homes or communities are subject to change without notice or obligation. Illustrations are artists depictions only and may differ from completed improvements. All prices subject to change without notice. Please contact your sales associate before writing an offer.

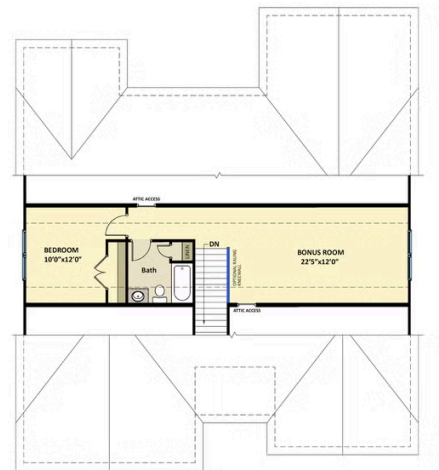
ARCHIVED 3/31/2022

The Cambridge
CC1850

FIRST FLOOR



SECOND FLOOR



Prices, plans, dimensions, features, specifications, materials, and availability of homes or communities are subject to change without notice or obligation. Illustrations are artists depictions only and may differ from completed improvements. All prices subject to change without notice. Please contact your sales associate before writing an offer.