



2863 Tucker Hill Drive
Grimesland, NC 27837

TUCKER HILL FARM - GARLAND

CONTACT OUR NEW HOME SPECIALISTS

MAGGIE & JESSICA

Call Us @ 910-405-8311

info@cavinessandcates.com



Priced

\$398,900

2,090 Sq Ft

1.5 Story

4 Beds

3.0 Baths

2 Car Garage

Primary Bedroom: Down

About 2863 Tucker Hill Drive

- Open concept great room with vaulted ceiling with faux wood beam and gas log fireplace with floating mantle stained in "Loft Pine".
- Kitchen with island and sink overlooking the great room, quartz countertops in "New Willow White", subway tile backsplash in "Arctic White" set in a brick pattern, white shaker cabinets, and pantry; Stainless steel microwave, dishwasher, and gas range.
- Dining area with access to rear covered porch.
- Primary suite with tray ceiling and crown molding; Primary bathroom with dual vanity with center

...Read More Online

About The Community.

Discover the charm of Tucker Hill Farm, a private community where modern living meets country tranquility! Nestled just off Tucker Road, this exclusive enclave of only 55 homes offers spacious homesites—some spanning over an acre—giving you room to breathe while staying just 15 minutes from the vibrant shopping, dining, and entertainment of Uptown Greenville.

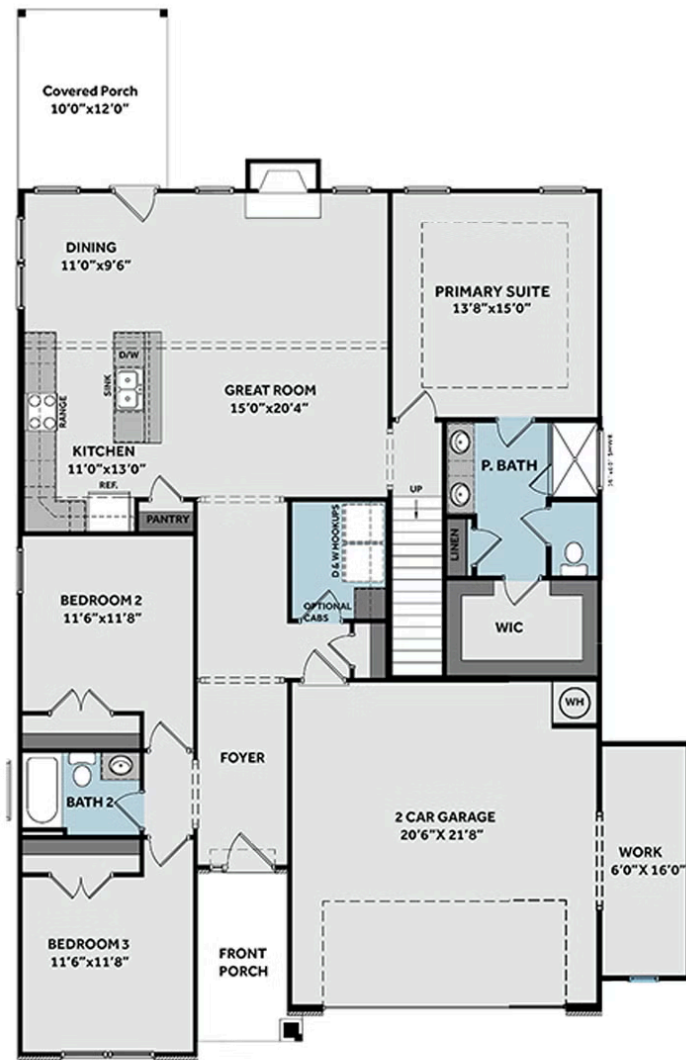
Here, you'll find expertly designed home plans, superior craftsmanship, and the quality you expect—all backed by the signature Caviness & Cates 1-2-10 year in-house warranty. Escape the hustle and bustle without sacrificing convenience—Tucker Hill Farm is waiting to welcome you home!

...Read More Online

Prices, plans, dimensions, features, specifications, materials, and availability of homes or communities are subject to change without notice or obligation. Illustrations are artists depictions only and may differ from completed improvements. All prices subject to change without notice. Please contact your sales associate before writing an offer.



FIRST FLOOR



SECOND FLOOR

